

Christmas

@ JK Eder TAG SALE 2020

Start: 23. December Sluiting: 30. December

www.eurogenes.com



Carf Emeraude EX-91-NL

+3.45 . **+2860** . **+2.70**
 PTAT GTPI UDC

515HO00371

Siemers



HAVE IT ALL^{BB}



PRODUCTION

+801 Milk // +0.19%F // +0.06%P // +128 CFP

TYPE

PTAT +3.45 // UDC +2.70 // FLC +1.66

PERFECT set of legs: RLS +0.69 // RLR +2.05

The **ONLY** available bull in the breed combining
 >2860 GTPI, >3.45 PTAT (TYPE) & >-0.8 DPR

Have It All and Happen are full brothers, pedigree:

EXCALIBUR
 x VG-88 2yr, King Doc
 x EX-g1 Monterey
 x Cookiecutter Hanker EX-94

Picture: grand dam & sisters



Left, dam: Siemers Doc Hanker 28653 VG-88-USA 2yr.

515HO00370

Siemers



HAPPEN^{A2A2}

PRODUCTION

+976 Milk // +0.11%F // +0.04%P

TYPE

PTAT +3.73 // UDC +3.11 // FLC +1.90

+4.48 Rear Udder Height

+4.63 Rear Udder Width

+3.27 TW

+0.33 RLS

+2.38 RLR

-0.19 TL

+2754 GTPI

+3.73 PTAT

The **#1** GTPI bull in the breed

>3.73 PTAT (TYPE) & **>950** MILK



WWW.AI-TOTAL.COM

INFORMATIE / INFORMATION

Start	Woensdag 23 december / Wednesday 20. December
Einde / Closing	Woensdag 30 december, 21:00 uur Wednesday 30. December, 09:00 PM (Dutch Time)

VEILING METHODE / SALE METHOD



VEILING VIA SALE WEBSITE <http://sale.eurogenes.com>
Of, volg de link via www.eurogenes.nl

TAG + SALE

- > Elk lot begint met een Start Prijs en een Koop Nu prijs
- > De veiling verloopt bij opbod
- > Een bidder heeft de optie om op elk moment van de veiling het lot te kopen voor de Koop Nu prijs. Zodra een lot is verkocht voor de Koop Nu prijs wordt het lot gesloten.

Let op: Zodra u een lot koopt voor de Koop Nu prijs wordt het lot gesloten en is het voor anderen niet meer mogelijk om dit lot te kopen.



SALE THROUGH THE SALE WEBSITE <http://sale.eurogenes.com>
Or, follow the link through www.eurogenes.com

TAG + SALE

- > Each lot has a "Start Price" and a TAG+ "Buy Now" price
- > The sale will run by the system of higher offer / upgoing bids
- > A bidder has the option to buy the lot at any moment for the "Buy Now" price. As soon the lot sold for the "Buy Now" price the lot will be closed

Note: As soon somebody buys a lot for the "Buy Now" price, this item will not available anymore for others to buy.

BEZICHTIGING / VISITS

We bieden de mogelijkheid om op afspraak de dieren te bezichtigen, voor meer informatie of voor het maken van een afspraak kunt u contact opnemen met:
Jan Kolff - Tel. 06 53803396 - Email. jankolff@planet.nl

You are welcome for a visit to JK Eder Holsteins and to view the sale animals, for more information or to make an appointment, please contact Jan Kolff - Tel. +31 (0)6 53803396
- Email. jankolff@planet.nl

Address: Oudendijk 75 - 4285 WJ Woudrichem - NL

SALE CONTACTS

NL & Algemeen / General

Jan Kolff	+31 (0)6 53803396	jankolff@planet.nl
Lisa Kolff	+31 (0)6 13743842	lisa_kolff@hotmail.com
Emma Scholten	+31 (0)652897333	escholten@eurogenes.nl
Arjan v.d. Vlis	+31 (0)6 43985150	avdvlis@eurogenes.nl
Jan de Vries	+31 (0)6 26250502	jandevries@diamond-genetics.nl
Jentsje Bootsma	+31 (0)6 46581545	j.bootsma@diamond-genetics.nl

DE Nici Nosbisch	+49 (0)1714368388	nici_nosbisch@web.de
FR Jan van den Oord	+33 (0)679961625	jan.vdo@diamond-genetics.fr
DK Martin Rasmussen	+45 (0)28998625	martinfremad@hotmail.com
IE Gareth O'Brien	+353 (0)851539046	obriengarethj@gmail.com
IT Vki Singh	+39 (0)334 303 7095	notorius.vki@icloud.com

TRANSPORT / EXPORT

Wij kunnen assisteren in het transport van uw aankoop, voor vragen neem contact op met:
Jan Kolff - Tel. 06 53803396 - Email. jankolff@planet.nl

We can assist you to coordinate the transport / export of your purchase, please contact us for
more information: Jan Kolff - Tel. +31 (0)6 53803396 - Email. jankolff@planet.nl

HEALTH STATUS

Alle dieren in de veiling zijn gecertificeerd vrij van IBR, BVD, Lepto, Salmonella & Para status A.
Lot nummers 1, 10, 18, 24 en 28 zijn gevaccineerd voor IBR (Bovilis IBR marker live) & BVD
(Bovilis BVD (=type 1)).

All the heifers and cows are certified free of IBR, BVD, Lepto, Salmonella and Para A.
Lots 1, 10, 18, 24 and 28 are vaccinated for IBR (Bovilis IBR marker live) & BVD (Bovilis BVD
(=type 1)).

Every product for

SHOWING, GROOMING & CARE



design by Holstein International • photo: Han Hopman



Livestock Show Equipment

Erica Rijneveld

Tel.: +31 (0)651 527 489

E-mail: info@showequip.com

www.showequip.com

01. JK Eder DG **SILLY** 5 VG-87-NL 2yr.

NL 680096191 • 05.04.2018 • Kalf datum: 19.05.2020 • Huidige dagproductie: 39,6 kgM

2.01 305d 11.098kgM 3.4%F 3.5%P (proj.) 122 LW • Geïnsemineerd met Stantons CHIEF op 29.11.2020

Wa-Del **ABS BOURBON**

(Montross x Massey x Superstition)

JK Eder DG Silly I VG-86-NL VG-87-MS 3yr.

Conf. VG-86-NL VG-87-MS 3yr.

2.08 450d 14.028kgM 4.3% 608F 3.7% 516P
4.00 520d 18.709kgM 4.4% 818F 3.8% 704P

- **Full brother sold for 44.000 EUR /** Volle broer verkocht voor 44.000 EUR
- **Dam to: /** Moeder van: JK Eder DG Silvester VG-89-NL 3yr.
 - Succesvolle deelname HHH-Show 2019
 - Succesful participant at HHH-Show 2019

Mr Welcome Hill **TANGO**

JK Eder DG Silly VG-85-NL VG-85-MS

Conf. VG-85-NL VG-85-MS

2.05 517d 12.679kgM 4.3% 547F 3.7% 474P
5.01 472d 16.311kgM 4.1% 670F 3.6% 593P
6.06 443d 13.242kgM 4.4% 577F 3.8% 500P

- **Former top 20 GTPI cow in Europe /** Voormalig top 20 GTPI koe in Europa
- **Dam to: /** Moeder van Seducer & Season @ Semex & Sullivan @ Al-Total

De-Su 521 **BOOKEM**

All.Nure Baxter Silvy *CV EX-90-NL 5yr.

Conf. EX-90-NL EX-MS 5yr.

2.00 305d 12.718kgM 3.8% 483F 3.2% 402P
5.04 305d 12.591kgM 3.9% 491F 2.9% 365P

- **s. Emerald-Acr-Sa T-BAXTER**
- **Former #1 GTPI Cow in Europe!! /** Voormalige #1 GTPI koe in Europa!!
- **Contracted World Wide /** Wereldwijd gecontracteerd
- **Res. Sr. Champion Dairy Fair '14**

Volgende moeders

4. La Felce Seretta EX-91-IT
5. Aurora Nesta EX-91-IT
6. Morningview Aerostar Jix VG-87-USA
7. Morningview Bellwood July GP-USA
8. Morningview Converse Judy EX-93-USA GMD DOM

AB-87 punten vaars voorspeld met >10.000kgM en 3.5% EI-WIT!! Show potentie!! Volle broer van de moeder is verkocht voor 44.000 EUR. Overgrootmoeder is de voormalige #1 GTPI koe van Europa: All.Nure Baxter Silvy *CV EX-90-NL 5jr. Diepe Noord-Amerikaanse koe familie die terugvoert op Morningview Converse Judy EX-93-USA GMD DOM.

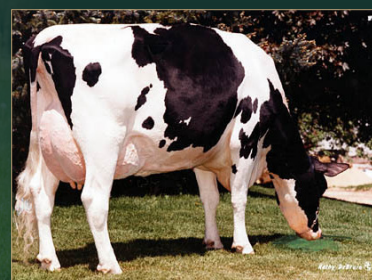
VG-87-NL 2yr. Bourbon projected with >10.000kgM and 3.5% PROTEIN! Show potential!! Full brother to dam sold for 44.000 EUR. Great-grand dam is the former #1 GTPI cow in Europe: All.Nure Baxter Silvy *CV EX-90-NL 5yr. Deep North-American cow family tracing back to Morningview Converse Judy EX-93-USA GMD DOM.

3rde Moeder: All. Nure Baxter Silvy *CV EX-90-NL EX-MS 5yr.

Voormalig #1 GTPI koe van Europa



Grootmoeder: JK Eder DG Silly VG-85-NL 2yr.



Stammoeder: Morningview Converse Judy EX-93-USA GMD DOM

Christmas @ JK Eder TAG SALE

Alex Art

02. Capoens 7589 **NOBLE** 475

BE 917290475 • 26.05.2020

GTPI index (12/20): +2905 GTPI // +793 NM\$ // +1.37 PTAT // +825 Milk // +0.22%F // +0.05%P

#15 GTPI & #19 NET MERIT Calf <9 months in Europe - December 2020

Mr Spring **NOBLE**

(AltaSpring x Numero Uno x Robust)

Pine-Tree 6586 **ACHI** 7589-ET

- **Dam to:** / Moeder van: Pine-Tree Lionel COWEN (+2897 GTPI) @ ST-Genetics
- **Several sons >2800 GTPI** / Meerdere zonen >2800 GTPI
- **Dtrs up to almost 3000 GTPI!!** / Dtrs met bijna 3000 GTPI

ABS **ACHIEVER**

Green-Banks Damaris 6586-ET EX-90-USA

Conf. EX-90-USA

- **Donor dam** / Stiermoeder
- **Dam to:** / Moeder van: Pine-Tree DEFENSE @ Genus-ABS & Pine-Tree PLAZA @ Genus-ABS
- **One of the highest Damaris daughters in the breed!** / Een van de hoogste Damaris dochters van het ras!
- **Grand Daughter of Oman Mirror** / Kleindochter van Oman Mirror

S-S-I Sterling **DAMARIS**

Triplecrown Tango 632-ET VG-88-USA

Conf. VG-88-USA

2-00 3x 309d 14.324kgM 3.4% 487F 3.3% 472P

- **s. Mr Welcome Hill TANGO**
- **Several dtrs >2700 GTPI** / Meerdere dochters >2700 GTPI!

Volgende moeders

4. Seagull-Bay Oman Mirror-ET VG-86-USA DOM
5. Seagull-Bay Manat Mirage EX-90-USA GMD DOM
6. Lynmead Celsius Minnow EX-91-USA GMD DOM
7. CMV Melwood Mindy VG-85-USA GMD DOM
8. Briarpatch-R Misty VG-85-USA GMD DOM
9. Rilara Mars Las Ravena EX-91-USA GMD DOM
10. Rilara Haven Charming Las VG-87-USA GMD DOM
11. Rag Apple Locust-Grove Charm VG-86-USA GMD DOM

Het hoogste GTPI kalf wat verkocht wordt in 2020 in Europa met +2905 GTPI. De #1 GTPI Noble dochter van de wereld! Maak uw dromen waar en bemachtig de absolute top van de Seagull-Bay Oman Mirror-ET AB-86-USA familie! Bewezen koefamilie die al meerdere stieren voor de K.I. leverde zoals: Robust, King Royal, Jaguar, Mayflower & veel meer!

The highest GTPI female to sell in Europe in 2020 at +2905 GTPI!! The #1 GTPI Noble dtr in the WORLD! Make your dreams come true and get into the absolutely top of the Seagull-Bay Oman Mirror-ET VG-86-USA family! Proven bull producing family that deliverd many bulls for A.I. like: Robust, King Royal, Jaguar, Mayflower & much more!

Vierde moeder: Seagull-Bay Oman Mirror-ET VG-86-USA DOM

Invloedrijke stiermoeder wereldwijd!



3. M. Triplecrown Tango 632-ET VG-88-USA



5. M. Seagull-Bay Manat Mirage EX-90-USA GMD DOM



Frank Robinson

Christmas @ JK Eder TAG SALE

03.**JK Eder DG Sidekick ESMERALDA**

NL 657997520 • 25.10.2020

Walnutlawn SIDEKICK

(Abbott x McCutchen x Lavanguard)

JK DG Esmeralda EX-92-NL EX-94-MS**Conf.** EX-92-NL EX-94-MS

2.02 323d 8.888kgM 4.3% 382F 3.5% 311P
 3.02 439d 15.325kgM 4.2% 649F 3.6% 550P
 4.07 316d 13.230kgM 4.3% 564F 3.3% 440P
 5.06 428d 13.780kgM 4.5% 620F 3.7% 512P

- 6th place European Show Libramont '19
- Udder Champion Noordeloos '18
- Res. Champion 2yr. Old National HHH Show '16
- Champion 2yr. Old Dairy Fair Mariënwaerd '16
- Res. Int. Champion Dairy Fair Mariënwaerd '17
- Res. Champion 2yr. Old Hoornaar '16
- 1st Intermediate Class National NRM Show '17

Val-Bisson DOORMAN**Carf Emeraude EX-91-NL****Conf.** EX-91-NL

2.03 570d 17.721kgM 3.9% 694F 3.4% 601P
 4.00 330d 15.317kgM 3.9% 598F 3.2% 482P
 5.06 305d 15.930kgM 3.7% 589F 3.1% 497P

- Champion 2-Yr. Old SPACE 2011
- 1st Jr. 2-Yr. National Show Le Mans 2011
- 6th in the finals at the Nat. NRM Show 2012
- Grand Champion Wintershow West-Brabant 2014
- The ONLY cow ALIVE with 6 EXCELLENT dtrs /
 De enige levende koe met 6 EXCELLENTE dtrs
- >95.000kgM lifetime production /
 >95.000kgM levensproductie

Braedale GOLDWYN**Agathe VG-88-FR****Conf.** VG-88-FR

2.03 305d 10.366kgM 3.2% 332F 3.1% 321P
 3.06 305d 13.338kgM 3.5% 467F 3.1% 413P

- s. Pictson SHOTTLE
- 3rd Sr. Cow at the Nat. Show Le Mans 2011

Volgende moeders

4. Toulouse VG-89-FR 2yr.
5. Rosière EX-90-FR
6. Menthe VG-89-FR
7. Ixias EX-93-FR
8. Eglantine EX-94-FR

Dromen worden werkelijkheid!! JK DG Esmeralda EX-92-NL haar prachtige SIDEKICK dochter wordt verkocht!! Esmeralda was 6de in haar klasse op de Europese show in Libramont dit jaar en wordt elke lacatie beter en beter!! Haar moeder Carf Emeraude was Frans Nationaal kampioene als vaars!! Dezelfde familie als Amaraante EX-FR - 2x Franse koe van het jaar.

Dreams are getting true!! JK DG Esmeralda EX-92-NL her lovely SIDEKICK sells. Esmeralda was 6th in her section at this years European Show in Libramont and gets better every single year!! Her dam Carf Emeraude was French National Champion as a 2yr. Old!! Same family as Amarante EX-FR - 2 x French Cow of the Year.

Moeder: JK DG Esmeralda EX-92-NL EX-94-MS
 6de plaats Europese show Libramont 2019



Zus van Esmeralda: Sellasoe EX-90-BE (s. Aftershock)



Volle zus Esmeralda: R.S. Doorman Australia



Lianna Kolff

Christmas @ JK Eder TAG SALE

04. 4 FEMALE EMBRYOS

#4 FEMALE Blondin THUNDER STORM x JK DG Esmeralda EX-92-NL EX-94-MS

Method: ET - Grade A - Direct Transfer

Location: The Netherlands

FEMALE Blondin THUNDER STORM

(Jacoby x Beemer x Bolton)

JK DG Esmeralda EX-92-NL EX-94-MS

Conf. EX-92-NL EX-94-MS

2.02 323d 8.888kgM 4.3% 382F 3.5% 311P
3.02 439d 15.325kgM 4.2% 649F 3.6% 550P
4.07 316d 13.230kgM 4.3% 564F 3.3% 440P
5.06 428d 13.780kgM 4.5% 620F 3.7% 512P

- 6th place European Show Libramont '19
- Udder Champion Noordeloos '18
- Res. Champion 2yr. Old National HHH Show '16
- Champion 2yr. Old Dairy Fair Mariënwaerd '16
- Res. Int. Champion Dairy Fair Mariënwaerd '17
- Res. Champion 2yr. Old Hoornaar '16
- 1st Intermediate Class National NRM Show '17

Val-Bisson DOORMAN

Carf Emeraude EX-91-NL

Conf. EX-91-NL

2.03 570d 17.721kgM 3.9% 694F 3.4% 601P
4.00 330d 15.317kgM 3.9% 598F 3.2% 482P
5.06 305d 15.930kgM 3.7% 589F 3.1% 497P

- Champion 2-Yr. Old SPACE 2011
- 1st Jr. 2-Yr. National Show Le Mans 2011
- 6th in the finals at the Nat. NRM Show 2012
- Grand Champion Wintershow West-Brabant 2014
- The ONLY cow ALIVE with 6 EXCELLENT dtrs /
De enige levende koe met 6 EXCELLENTE dtrs
- >95.000kgM lifetime production /
>95.000kgM levensproductie

Braedale GOLDWYN

Agathe VG-88-FR

Conf. VG-88-FR

2.03 305d 10.366kgM 3.2% 332F 3.1% 321P
3.06 305d 13.338kgM 3.5% 467F 3.1% 413P

- s. Pictson SHOTTLE
- 3rd Sr. Cow at the Nat. Show Le Mans 2011

Volgende moeders

4. Toulouse VG-89-FR 2yr.
5. Rosière EX-90-FR
6. Menthe VG-89-FR
7. Ixias EX-93-FR
8. Eglantine EX-94-FR

Dit is de kans!! JK DG Esmeralda EX-92-NL haar GESEKSTE Thunder Storm (+3.38 PTAT) embryo's worden verkocht!! Esmeralda was 6de in haar klasse op de Europese show in Libramont dit vorig jaar en wordt elke lacatie beter en beter!! Haar moeder Carf Emeraude was Frans Nationaal kampioene als vaars!! Dezelfde familie als Amaraante EX-FR - 2x Franse koe van het jaar.

Opportunity knocks!! JK DG Esmeralda EX-92-NL her FEMALE Thunder Storm (+3.38 PTAT) are selling!! Esmeralda was 6th in her section at 2019's European Show in Libramont and gets better every single year!! Her dam Carf Emeraude was French National Champion as a 2yr. Old!! Same family as Amarante EX-FR - 2 x French Cow of the Year.



M. JK DG Esmeralda EX-92-NL EX-94-MS



Dezelfde familie: Capj Irana
- 1ste @ Europese Show Colmar '16 & Frans Nationaal kampioene

Moeder: JK DG Esmeralda EX-92-NL EX-94-MS
6de plaats Europese show Libramont 2019

05. JK Eder DG Thunder Storm **ELIA**

NL 657997366 • 06.08.2020

GTPi index (12/20): +2.20 PTAT // +1.82 UDC // +241 Milk // +0.01%P / +1.1 PL

Canadian index (12/20): +11 Conf. / +9 Mammary System / +10 Feet & Legs

Blondin THUNDER STORM

(Jacoby x Beemer x Bolton)

JK Eder DG Byway Eliza VG-89-NL 3yr.

Conf. VG-89-NL VG-89-MS 3yr. (MAX)

2.05 354d 11.802kgM 3.7% 437F 3.5% 417P
3.06 305d 11.877kgM 3.6%F 3.5%P (proj.)

- **3rd place and at final 6 HHH-Show 2019** / 3rde plaats en bij laatste 6 HHH-Show 2019
- **2yr. Old Champion Hoornaar 2019**
- **Top ranking PTAT cow in Europe (>2yr), PTAT +2.37 with >390 Milk, good health traits & <2.5% SCE / Top PTAT koe in Europa (>2jr), PTAT +2.37 met >390 melk en super gezondheidskenmerken**

OH-River-Syc BYWAY

JK Eder DG Elisa VG-87-NL VG-88-MS 2yr.

Conf. VG-87-NL VG-88-MS 2yr.

2.01 305d 8.892kgM 4.4% 391F 3.8% 339P
3.06 305d 11.163kgM 4.8% 535F 3.8% 535P

- **3.8% PROTEIN / 3.8% EIWIT**
- **Halfzus van:** / Maternal sister to DG JK Eder Edrea EX-90-NL EX-91-MS 4yr. - Res. 2-Yr Old Champion Wintershow Noordeloos 2018
- **Great production & transmitting cow / Geweldige productie en fokkoe**

Val-Bisson DOORMAN

JK Eder Emeraude 2 VG-88-NL VG-89-MS 2yr.

Conf. VG-88-NL VG-89-MS 2yr.

2.02 367d 8.504kgM 4.9% 414F 4.0% 338P
3.06 322d 8.649kgM 5.1% 440F 3.9% 340P
4.06 359d 8.051kgM 4.6% 369F 4.0% 320P

- **s. Amighetti NUMERO UNO**
- **Res. Champion 2-Yr. Old & Best Udder Hoornaar '15**
- **Almost 4.0% PROTEIN / Bijna 4.0% EIWIT!!**
- **Sister to:** / Zus van: JK DG Esmeralda EX-92-NL

Volgende moeders

4. Carf Emeraude EX-91-NL
5. Agathe VG-88-FR
6. Toulouse VG-89-FR 2yr.
7. Rosière EX-90-FR
8. Menthe VG-89-FR
9. Ixias EX-93-FR
10. Eglantine EX-94-FR

Feel the thunder!! +2.20 PTAT / +11 Conf. Thunder Storm dochter van de MAX-ingeschreven 3 jarige in Nederland en vaarzenkampioene Fokveedag Hoornaar 2019 wordt verkocht!! Een diepe Franse koe familie die terug voert of de fameuze fokkoe Carf Emeraude EX-91-NL. De enige koe in leven met 6 EXCELLENTE dtrs in Europa.

Feel the thunder!! +2.20 PTAT / + 11 Conf. Thunder Storm of the MAX-scored 3-Yr Old in the Netherlands and 2-Yr Old Champion Fokveedag Hoornaar 2019 sells!! Deep French cow family tracing back to the breeding phenomenon Carf Emeraude EX-91-NL - the ONLY cow alive with 6 EX-dtrs in Europe!

Moeder: JK Eder DG Byway Eliza VG-89-NL VG-89-MS 3yr. (MAX)

Vaarzenkampioene Fokveedag Hoornaar 2019



4. M. Carf Emeraude EX-91-NL



Zus van M. JK Eder DG Edrea EX-90-NL EX-91-MS 4yr.

06. JK Eder DG Udenied **ELIZA** (A2A2)

NL 657997227 • 19.05.2020

GTPI index (12/20): +2.76 PTAT // +1.45 UDC // +350 Milk // 2.89 SCS / +0.3 PL

Our-Favorite **UNDENIED**

(Solomon x Atwood x Shottle)

JK Eder DG Byway Eliza VG-89-NL 3yr.

Conf. VG-89-NL VG-89-MS 3yr. (MAX)

2.05 354d 11.802kgM 3.7% 437F 3.5% 417P
3.06 305d 11.877kgM 3.6%F 3.5%P (proj.)

- **3rd place and at final 6 HHH-Show 2019** / 3rde plaats en bij laatste 6 HHH-Show 2019
- **2yr. Old Champion Hoornaar 2019**
- **Top ranking PTAT cow in Europe (>2yr), PTAT +2.37 with >390 Milk, good health traits & <2.5% SCE** / Top PTAT koe in Europa (>2jr.), PTAT +2.37 met >390 melk en super gezondheidskenmerken

OH-River-Syc **BYWAY**

JK Eder DG Elisa VG-87-NL VG-88-MS 2yr.

Conf. VG-87-NL VG-88-MS 2yr.

2.01 305d 8.892kgM 4.4% 391F 3.8% 339P
3.06 305d 11.163kgM 4.8% 535F 3.8% 535P

- **3.8% PROTEIN** / 3.8% EIWIT
- **Halfzus van:** / Maternal sister to DG JK Eder Edrea EX-90-NL EX-91-MS 4yr. - Res. 2-Yr Old Champion Wintershow Noordeloos 2018
- **Great production & transmitting cow** / Geweldige productie en fokkoe

Val-Bisson **DOORMAN**

JK Eder Emeraude 2 VG-88-NL VG-89-MS 2yr.

Conf. VG-88-NL VG-89-MS 2yr.

2.02 367d 8.504kgM 4.9% 414F 4.0% 338P
3.06 322d 8.649kgM 5.1% 440F 3.9% 340P
4.06 359d 8.051kgM 4.6% 369F 4.0% 320P

- **s. Amighetti NUMERO UNO**
- **Res. Champion 2-Yr. Old & Best Udder Hoornaar '15**
- **Almost 4.0% PROTEIN** / Bijna 4.0% EIWIT!!
- **Sister to:** / Zus van: JK DG Esmeralda EX-92-NL

Volgende moeders

4. Carf Emeraude EX-91-NL
5. Agathe VG-88-FR
6. Toulouse VG-89-FR 2yr.
7. Rosière EX-90-FR
8. Menthe VG-89-FR
9. Ixias EX-93-FR
10. Eglantine EX-94-FR

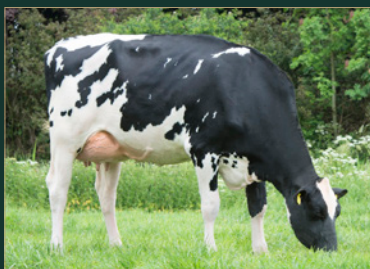
+2.76 PTAT en Beta-caseïne A2A2 Udenied dochter van de MAX-ingeschreven 3 jarige in Nederland en vaarzenkampioene Fokveedag Hoornaar 2019 wordt verkocht!! Een diepe Franse koe familie die terug voert of de fameuze fokkoe Carf Emeraude EX-91-NL. Dezelfde familie als Capj Irana - 1ste op de Europese Show in Colmar 2016 en Frans Nationaal kampioene.

+2.76 PTAT and Beta-Casein A2A2 Udenied dtr of the MAX-scored 3-Yr Old in the Netherlands and 2-Yr Old Champion Fokveedag Hoornaar 2019 sells!! Deep French cow family tracing back to the breeding phenomenon Carf Emeraude EX-91-NL. The same family as Capj Irana - 1st @ European Show Colmar '16 & French National Champion.

Moeder: JK Eder DG Byway Eliza VG-89-NL VG-89-MS 3yr. (MAX)
Vaarzenkampioene Fokveedag Hoornaar 2019



4. M. Carf Emeraude EX-91-NL



Gr. M: JK Eder Elisa VG-87-NL VG-88-MS 2yr.



Christmas @ JK Eder TAG SALE

Lianna Kolff

07. 4 FEMALE EMBRYOS

#4 FEMALE Farnear DELTA-LAMBDA x JK Eder DG Byway Eliza VG-89-NL VG-89-MS 3yr. (MAX)

Method: ET - Grade A - Direct Transfer

Location: The Netherlands

FEMALE Farnear DELTA-LAMBDA

(Delta x Numero Uno x Snowman)

JK Eder DG Byway Eliza VG-89-NL 3yr.

Conf. VG-89-NL VG-89-MS 3yr. (MAX)

2.05 354d 11.802kgM 3.7% 437F 3.5% 417P
3.06 305d 11.877kgM 3.6%F 3.5%P (proj.)

- 3rd place and at final 6 HHH-Show 2019 / 3rde plaats en bij laatste 6 HHH-Show 2019
- 2yr. Old Champion Hoornaar 2019
- Top ranking PTAT cow in Europe (>2yr), PTAT +2.37 with >390 Milk, good health traits & <2.5% SCE / Top PTAT koe in Europa (>2jr), PTAT +2.37 met >390 melk en super gezondheidskenmerken

OH-River-Syc BYWAY

JK Eder DG Elisa VG-87-NL VG-88-MS 2yr.

Conf. VG-87-NL VG-88-MS 2yr.

2.01 305d 8.892kgM 4.4% 391F 3.8% 339P
3.06 305d 11.163kgM 4.8% 535F 3.8% 535P

- 3.8% PROTEIN / 3.8% EIWIT
- Halfzus van: / Maternal sister to DG JK Eder Edrea EX-90-NL EX-91-MS 4yr. - Res. 2-Yr Old Champion Wintershow Noordeloos 2018
- Great production & transmitting cow / Geweldige productie en fokkoe

Val-Bisson DOORMAN

JK Eder Emeraude 2 VG-88-NL VG-89-MS 2yr.

Conf. VG-88-NL VG-89-MS 2yr.

2.02 367d 8.504kgM 4.9% 414F 4.0% 338P
3.06 322d 8.649kgM 5.1% 440F 3.9% 340P
4.06 359d 8.051kgM 4.6% 369F 4.0% 320P

- s. Amighetti NUMERO UNO
- Res. Champion 2-Yr. Old & Best Udder Hoornaar '15
- Almost 4.0% PROTEIN / Bijna 4.0% EIWIT!!
- Sister to: / Zus van: JK DG Esmeralda EX-92-NL

Volgende moeders

4. Carf Emeraude EX-91-NL
5. Agathe VG-88-FR
6. Toulouse VG-89-FR 2yr.
7. Rosière EX-90-FR
8. Menthe VG-89-FR
9. Ixias EX-93-FR
10. Eglantine EX-94-FR

GESEKSTE embryo's van de bewezen GTPI stier: Farnear DELTA-LAMBDA direct uit de regerend vaarzenkampioene Fokveedag Hoornaar 2019: JK Eder DG Byway Eliza AB-89-NL 3jr. (MAX) Terug voerend op de Franse nationale kampioene en meervoudig show winnares: Carf Emeraude EX-91-NL.

FEMALE embryos by the decent proven GTPI bull Farnear DELTA-LAMBDA straight out the 2-Yr Old Champion Fokveedag Hoornaar 2019: JK Eder DG Byway Eliza VG-89-NL 3yr. (MAX) Tracing back to the French National Champion and multiple show winner: Carf Emeraude EX-91-NL.

Donor: JK Eder DG Byway VG-89-NL VG-89-MS 3yr. (MAX)

Regerend vaarzenkampioene Fokveedag Hoornaar 2019



4. M. Carf Emeraude EX-91-NL



Gr. M: JK Eder Elisa VG-87-NL VG-88-MS 2yr.

Alex Arkink

Christmas @ JK Eder TAG SALE

08. JK Eder DG **DANCE** 4

NL 627396975 • 29.10.2019

Oh-River-Syc **CRUSHABULL**

(Crush x Mogul x Meridian)

JK Eder DG Doorman Dance VG-87-NL 2yr.

Conf. VG-87-NL 2yr.

2.02 361d 7.870kgM 4.9% 388F 3.9% 309F
3.11 344d 12.462kgM 4.6% 575F 3.6% 450P

• **DOORMAN x GOLD CHIP**



JK Eder DG Dance 4 | Zij wordt verkocht!

Val-Bisson **DOORMAN**

JK Eder DG Gold Chip Darling EX-90-NL

Conf. EX-90-NL EX-MS 4yr.

2.01 339d 8.401kgM 3.6% 302F 3.3% 277P
4.00 305d 10.362kgM 3.8% 398F 3.2% 329P

- **Champion 2yr. old Mariënwaerd 2014**
- **Full sister to:** / Volle zus van:
DH Gold Chip Darling EX-96-CH
- Supreme Champion Swiss Expo 2017
- Grand Champion Expo Bulle 2018
- Moeder van Darlingo (@ Masterrind)

Mr. Chassity **GOLD CHIP**

Mr. Sam Darling VG-89-NL

Conf. VG-89-NL

2.05 305d 9.810kgM 4.3% 420F 3.3% 325P
4.05 305d 11.554kgM 4.4% 504F 3.2% 370P

- **s. Regancrest-Mr Drham SAM**
- **1st Hamm 2008**
- **Fantastic brood cow / Fantastische fokkoe**

Volgende moeders

4. Meadows-LLC BWM Dancia VG-88-USA
5. Regancrest Jolt Diantha VG-87-USA GMD DOM
6. Regancrest Elton Dream VG-86-USA GMD DOM
7. Snow-N Denises Dellia EX-95-USA 2E GMD DOM
8. Snow-N Dorys Denise EX-90-USA 2E GMD DOM

Zij is één van de pinken... die u niet wilt missen! Het beste uit de DARLING koefamilie, grootmoeder is de excellente volle zuster van de Swiss Expo Supreme Champion van 2017! Voert terug op de Regancrest Elton Dream, de volle zuster van o.a. DURHAM!

She is just one of those heifers... one that you really don't want to miss!! The very best from the DARLING cow family, grand dam is the EXCELLENT full sister to the Swiss Expo Supreme Champion of 2017. Goes back on Elton Dream, the full sister of the legendary Regancrest Elton DURHAM!

Volle zus van grootmoeder: DH Gold Chip Darling EX-96-CH
Supreme Champion Swiss Expo 2017 & Grand Champion Expo Bulle 2018



M. JK Eder DG Doorman Dance VG-87-NL 2yr.



Gr. M. JK Eder DG Gold Chip Darling EX-90-NL



Christmas @ JK Eder TAG SALE

09. 4 FEMALE EMBRYOS

#4 FEMALE Farnear DELTA-LAMBDA x JK Eder DG Dance 3

Method: ET - Grade A - Direct Transfer

Location: The Netherlands

FEMALE Farnear DELTA-LAMBDA

(Delta x Numero Uno x Snowman)

JK Eder DG Dance 3

• **Lovely +2.74 PTAT / +15 Conf. Crushtime dtr from the incredible DARLING'S!** / Schitterende +2.74 PTAT / +15 Conf. Crushtime dtr uit de klasse DARLING'S!



JK Eder DG Solomon Daryl VG-87-BE 2yr.
@ Hautmont Hill Holstein, Belgium
Solomon x JK Eder DG Gold Chip Darling

Col DG Crushtime

JK Eder DG Doorman Dance VG-87-NL 2yr.
Conf. VG-87-NL 2yr.

2.02 361d 7.870kgM 4.9% 388F 3.9% 309F
3.11 344d 12.462kgM 4.6% 575F 3.6% 450P

• **DOORMAN x GOLD CHIP**

Val-Bisson DOORMAN

JK Eder DG Gold Chip Darling EX-90-NL

Conf. EX-90-NL EX-MS 4yr.

2.01 339d 8.401kgM 3.6% 302F 3.3% 277P
4.00 305d 10.362kgM 3.8% 398F 3.2% 329P

- **Champion 2yr. old Mariënwaerdt 2014**
- **Full sister to:** / Volle zus van:
DH Gold Chip Darling EX-96-CH
- Supreme Champion Swiss Expo 2017
- Grand Champion Expo Bulle 2018

Volgende moeders

4. Mr. Sam Darling VG-89-NL
5. Meadows-LLC BWM Dancia VG-88-USA
6. Regancrest Jolt Diantha VG-87-USA GMD DOM
7. Regancrest Elton Dream VG-86-USA GMD DOM
8. Snow-N Denises Dellia EX-95-USA 2E GMD DOM
9. Snow-N Dorys Denise EX-90-USA 2E GMD DOM

Vrouwelijke embryo's van één van de meest gevraagde stieren op het moment: Farnear DELTA-LAMBDA. Het allerbeste uit de DARLING koefamilie, overgrootmoeder is de excellente volle zuster van de Swiss Expo Supreme Champion van 2017! Voert terug op de Regancrest Elton Dream, de volle zuster van o.a. DURHAM!

FEMALE embryos by the HOT proven sire Farnear DELTA-LAMBDA. The very best from the DARLING cow family, great-grand dam is the EXCELLENT full sister to the Swiss Expo Supreme Champion of 2017. Goes back on Elton Dream, the full sister of the legendary Regancrest Elton DURHAM!

Volle zus van grootmoeder: DH Gold Chip Darling EX-96-CH

Supreme Champion Swiss Expo 2017 & Grand Champion Expo Bulle 2018



M. JK Eder DG Doorman Dance VG-87-NL 2yr.



Volle zus van 3.M. DH Gold Chip Darling EX-96-CH



Christmas @ JK Eder TAG SALE

10. JK Eder DG Udenied **ELICIA**

NL 680096432 • 24.09.2018 • Kalf datum: 21.10.2020 • Huidige dagproductie: 32,5 kgM
2.01 305d 8.689kgM 3.59%F 3.46%P (proj) GTPI index (12/20): +2.22 PTAT // +1.34 Rump Angle

Our-Favorite **UNDENIED**

(Solomon x Atwood x Shottle)

JK Eder DG Elise **VG-85-NL VG-88-MS La1.**

Conf. VG-85-NL VG-88-MS La1.

3.01 283d 9.159kgM 3.2% 294F 3.4% 310P

- **Fancy Brady heifer with +2.43 PTAT (12/20) /** Schitterende Brady pink met +2.43 PTAT (12/20)
- **Maternal sister to:** / Halfzus van JK Eder DG Byway Eliza VG-89-NL 3yr. - vaarzenkampioene Fokveedag Hoornaar 2019
- **Same family as:** / Dezelfde familie als JK DG Esmeralda EX-92-NL EX-94 uier - 6de op de Europese Show Libramont 2019 & Res. 2-Yr Old Champion HHH-Show 2016

Butz-Butler Atwood **BRADY**

JK Eder DG Elisa **VG-87-NL VG-88-MS 2yr.**

Conf. VG-87-NL VG-88-MS 2yr.

2.01 305d 8.892kgM 4.4% 391F 3.8% 339P
3.06 305d 11.163kgM 4.8% 535F 3.8% 535P

- **3.8% PROTEIN / 3.8% EIWIT**
- **Halfzus van:** / Maternal sister to DG JK Eder Edrea EX-90-NL EX-91-MS 4yr. - Res. 2-Yr Old Champion Wintershow Noordeloos '18
- **Great production & transmitting cow /** Geweldige productie en fokkoe

Val-Bisson **DOORMAN**

JK Eder Emeraude 2 **VG-88-NL VG-89-MS 2yr.**

Conf. VG-88-NL VG-89-MS 2yr.

2.02 367d 8.504kgM 4.9% 414F 4.0% 338P
3.06 322d 8.649kgM 5.1% 440F 3.9% 340P
4.06 359d 8.051kgM 4.6% 369F 4.0% 320P

- **s. Amighetti NUMERO UNO**
- **Res. Champion 2-Yr. Old & Best Udder Hoornaar '15**
- **Almost 4.0% PROTEIN /** Bijna 4.0% EIWIT!!
- **Sister to:** / Zus van: JK DG Esmeralda EX-92-NL

Volgende moeders

4. Carf Emeraude EX-91-NL
5. Agathe VG-88-FR
6. Toulouse VG-89-FR 2yr.
7. Rosière EX-90-FR
8. Menthe VG-89-FR
9. Ixias EX-93-FR
10. Eglantine EX-94-FR

Schitterende MELKVAARS van Udenied met +2.22 PTAT & klaar voor het grote werk! Moeder is voorspeld met bijna 10.000kgM en is een halfzus van de vaarzenkampioene Fokveedag Hoornaar 2019: JK Eder DG Eliza AB-89-NL 3jr. Het allerbeste wat de Emeraude familie u te bieden heeft!! Uw ticket voor het 2021 show seizoen!!

Lovely FRESH 2yr. Old with +2.22 PTAT by UNDENIED & READY TO RUMBLE!! Dam is projected with almost 10.000kgM and a maternal sister to the 2-Yr Old Champion Fokveedag Hoornaar 2019: JK Eder DG Eliza VG-89-NL 3yr. The best the Emeraude family can offer you!! She is your ticket for the 2021 show season!!



Moeder: JK Eder DG Elise



Halfzus van moeder: JK Eder DG Eliza VG-88-NL 2yr.

4. M. Carf Emeraude EX-91-NL

Frans nationaal kampioene & super fokkoe!!



II. JK Eder DG Sidekick **ELICIA**

NL 657997513 • 21.10.2020

Walnutlawn **SIDEKICK**

(Abbott x McCutchen x Lavanguard)

JK Eder DG Udenied Elicia

Just fresh! October '20, Currently: 32 kgM/day

- **Early FRESH Udenied dtr** / Vroeg verse UNDENIED dtr
- **+2.22 PTAT / +8 Conf. (12/20)**
- **Sells either in the JK Eder Christmas Sale /**
Wordt eveneens verkocht in de JK Eder Christmas Sale

Our-Favorite **UNDENIED**

JK Eder DG Elise **VG-85-NL VG-88-MS La1.**

Conf. VG-85-NL VG-88-MS La1.

3.01 283d 9.159kgM 3.2% 294F 3.4% 310P

- **Fancy Brady heifer with +2.43 PTAT (12/20)** / Schitterende Brady pink met +2.43 PTAT (12/20)
- **Maternal sister to:** / Halfzus van JK Eder DG Byway Eliza VG-89-NL 3yr. - vaarzenkampioene Fokveedag Hoornaar 2019
- **Same family as:** / Dezelfde familie als JK DG Esmeralda EX-92-NL EX-94 uier - 6de op de Europese Show Libramont 2019 &

Butz-Butler Atwood **BRADY**

JK Eder DG Elisa **VG-87-NL VG-88-MS 2yr.**

Conf. VG-87-NL VG-88-MS 2yr.

2.01 305d 8.892kgM 4.4% 391F 3.8% 339P
3.06 305d 11.163kgM 4.8% 535F 3.8% 535P

- **s. Val-Bisson DOORMAN**
- **3.8% PROTEIN / 3.8% EIWIT**
- **Halfzus van:** / Maternal sister to DG JK Eder Edrea EX-90-NL EX-91-MS 4yr. - Res. 2-Yr Old Champion Wintershow Noordeloos '18
- **Great production & transmitting cow /** Geweldige productie en fokkoe

Volgende moeders

4. JK Eder Emeraude 2 VG-88-NL VG-89-MS 2yr.
5. Carf Emeraude EX-91-NL
6. Agathe VG-88-FR
7. Toulouse VG-89-FR 2yr.
8. Rosière EX-90-FR
9. Menthe VG-89-FR
10. Ixias EX-93-FR

Potentieel hoog scorende PTAT Sidekick uit de Emeraude's! Grootmoeder is voorspeld met bijna 10.000kgM en is een halfzus van de vaarzenkampioene Fokveedag Hoornaar 2019: JK Eder DG Eliza AB-89-NL 3jr. Het beste uit de Emeraude familie!! Grijp uw kans!!

Potentially high scoring PTAT Sidekick dtr from the Emeraude's! Grand dam is projected with almost 10.000kgM and a maternal sister to the 2-Yr Old Champion Fokveedag Hoornaar 2019: JK Eder DG Eliza VG-89-NL 3yr. The best the Emeraude family has to offer you!! Take your shot!!



Halfzus van grootmoeder: JK Eder DG Eliza VG-89-NL 3yr. (MAX)



Dezelfde familie: Amarante EX-FR

5. M. Carf Emeraude EX-91-NL

Frans nationaal kampioene & super fokkoe!!



12. JK Eder Jordy **ROXINNE** Red

NL 627397079 • 25.12.2019

Cycle McGucci JORDY-RED

(McGucci x Gold Chip x Lion King)

JK Eder Rocca Roxinne I Red VG-88-NL 3yr.

Conf. VG-88-NL VG-88-MS 3yr.

2.03 328d 10.357kgM 3.6% 370F 3.6% 371P
3.02 287d 11.977kgM 3.9% 467F 3.7% 437P
3.02 305d 12.537kgM 3.9%F 3.7%P (proj.) LW121

- High R&W Polled Apoll-P dtr in the Dutch index / Hoge RODE Apoll-P dochter op NVI basis
- 3.7% PROTEIN / 3.7% EIWIT
- Tracing back the one and only 'Queen of the Breed' Glenridge Citation Roxy! / Terugvoerend op de 'Koningin van het ras' Glenridge Citation Roxy!



JK Eder Jordy Roxinne-Red | Zij wordt verkocht!

Schreur APOLL-P-RED

Rocca Roxinne *RC GP-84-NL 2yr.

Conf. GP-84-NL VG-86-MS 2yr.

2.04 388d 11.448kgM 4.0% 452F 3.7% 417P
3.06 364d 13.576kgM 3.8% 514F 3.4% 456P
4.08 305d 11.670kgM 4.10%F 3.51%P (proj)

Swissbec BREKEM *RC

Morningview NH Roxy *RC

Conf. NC

Died just after calving

- s. Hunsberger ALCHEMY *RC
- She looked very promising! Should scored VG easily in the WAL/BEL system / Zag er beloftevol uit! Zou gemakkelijk AB ingeschreven zijn in het WAL/BEL systeem.

Volgende moeders

4. Morningview Super Roxy *RC EX-90-USA DOM
5. Morningview Pronto C-Rae *RC EX-90-USA
6. Early-Autumn Golden Rae *RC EX-93-USA
7. Scientific Beauty Rae *RC EX-90-USA DOM
8. Scientific Jubilant Rae *RC EX-90-USA DOM
9. Hanoverhill Tony Rae EX-96-USA 3E GMD DOM
10. Hanoverhill TT Roxette EX-94-USA 2E GMD DOM
11. Mil-R-Mor Roxette EX-90-USA GMD DOM
12. C Glenridge Citation Roxy EX-97-USA 4E GMD

Showrijke RODE Jordy-Red dochter - Premier Sire World Dairy Expo 2019 terugvoerend op de 'Koningin van het ras' C Glenridge Citation Roxy EX-97!! Haar moeder is een beloftevolle rode 2de kalfs van Apoll *RF, ingeschreven met AB-88 3jr. en voorspeld met >12.00kgM met 3.7% EIWIT in haar tweede lijst!! Pedigree met 10 generaties EXCELLENTE moeders!!

Showy R&W Jordy-Red - Premier Sire World Dairy Expo 2019 backed by the 'Queen of the breed' C Glenridge Citation Roxy EX-97!! Her dam is a promising R&W VG-88-NL 3-Yr Apoll *RC daughter who is projected with >12.000kgM and 3.7% PROTEIN in her 2nd lactation! Pedigree with 10 gen. EXCELLENT dams!

Moeder: JK Eder Rocca Roxinne I P-Red VG-88-NL VG-88-MS 3yr.
Hoge RODE Apoll-P dochter op NVI basis



Lianna Kolff



Dezelfde familie: Scientific Debutante Rae EX-92-USA



3. M. Morningview NH Roxy *RC

Christmas @ JK Eder TAG SALE

13. DG ACRYL

NL 626659295 • 06.08.2020

GTPI index (12/20): +2690 GTPI // +630 NM\$ // +0.78 PTAT // +0.06%P // 2.77 SCS // +695 Milk

Mr Frazzled ARISTOCRAT

(Frazzled x Monterey x Mogul)

Farnear Dynasty Abyss

Conf. N.C.

- +2715 GTPI in combination with +623 NM\$ (12/20)
- No holes in her index: +1.2 DPR/ +106 CFP / 1.7% SCE/ 2.84 SCS/ +1.01 UDC (12/20)
- 10 generations VG- or EXCELLENT dams / 10 generaties AB- of EXCELLENT ingeschreven moeders
- Dam to: / Moeder van: Westcoast AUDI (+2830 GTPI) (s. Embellish) @ Semex

MR RUBICON DYNASTY-ET

Farnear Abby Delt 31523 GP-82-USA

Conf. GP-82-USA 3yr.

- Dam to: / Moeder van: een +2671 GTPI Wings zoon bij Genvis (12/20)

Mr Mogul DELTA

OCD Shan Abby 8729 VG-86-USA

Conf. VG-86-USA

2-01 2x 307d 10.587kgM 4.0% 425F 3.7% 396P
3-01 2x 305d 11.453kgM 3.8% 438F 3.6% 412P
4-04 2x 365d 13.027kgM 3.8% 496F 3.7% 476P

- s. Ladys-Manor Man-O-Shan-ET

Volgende moeders

4. Vision-Gen SH FRD A12276 EX-90-USA EX-MS DOM
5. Applious Jet Stream Alda VG-85-USA VG-MS DOM
6. Morningview Otsd April VG-87-USA GMD DOM
7. Morningview Gibbon Judy VG-85-USA GMD DOM
8. Morningview Converse Judy EX-93-USA GMD DOM
9. Morningview Aerostar Jix VG-87-USA
10. Walnutt Knoll Judy VG-87-USA GMD DOM

ARISTOCRAT dochter die hoog weet te scoren in meerdere indexen: +2690 GTPI / +630 NM\$. Zij brengt u nieuw bloed!! Nieuwe lijn van de Converse Judy EX-93 familie. Gevolgd door een Dynasty x Delta x AB-86 Man-O-Shan naar Vision-Gen SH FRD A 12276 EX-90-USA - invloedrijke stiermoeder voor diverse K.I.'s.

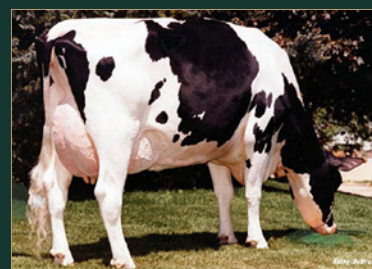
ARISTOCRAT daughter topping in several systems: +2690 GTPI / +630 NM\$! She will let you in! Different branch of the Converse Judy EX-93 family. Followed by a Dynasty x Delta x VG-86 Man-O-Shan to Vision-Gen SH FRD A12276 EX-90-USA - influential bull dam for several A.I.'s.

Vierde moeder: Vision-Gen SH FRD A12276 EX-90-USA EX-MS DOM

Invloudrijke stiermoeder voor diverse K.I.'s



5. M. Applious Jet Stream Alda VG-85-USA DOM



Stamkoe: Morningview Converse Judy EX-93-USA GMD DOM



© Lisa McCallough
Light & Color Photography

Christmas @ JK Eder TAG SALE

14. DG ABBEY

NL 626659303 • 28.07.2020

GTPI index (12/20): +2707 GTPI // +586 NM\$ // +1.31 PTAT // +0.03%P // 2.76 SCS // +1279 Milk

Mr Frazzled ARISTOCRAT

(Frazzled x Monterey x Mogul)

Farnear Dynasty Abyss

Conf. N.C.

- +2715 GTPI in combination with +623 NM\$ (12/20)
- No holes in her index: +1.2 DPR/ +106 CFP / 1.7% SCE/ 2.84 SCS/ +1.01 UDC (12/20)
- 10 generations VG- or EXCELLENT dams / 10 generaties AB- of EXCELLENT ingeschreven moeders
- Dam to: / Moeder van: Westcoast AUDI (+2830 GTPI) (s. Embellish) @ Semex

MR RUBICON DYNASTY-ET

Farnear Abby Delt 31523 GP-82-USA

Conf. GP-82-USA 3yr.

- Dam to: / Moeder van: een +2671 GTPI Wings zoon bij Genvis (12/20)

Mr Mogul DELTA

OCD Shan Abby 8729 VG-86-USA

Conf. VG-86-USA

2-01 2x 307d 10.587kgM 4.0% 425F 3.7% 396P
3-01 2x 305d 11.453kgM 3.8% 438F 3.6% 412P
4-04 2x 365d 13.027kgM 3.8% 496F 3.7% 476P

- s. Ladys-Manor Man-O-Shan-ET

Volgende moeders

4. Vision-Gen SH FRD A12276 EX-90-USA EX-MS DOM
5. Applious Jet Stream Alda VG-85-USA VG-MS DOM
6. Morningview Otsd April VG-87-USA GMD DOM
7. Morningview Gibbon Judy VG-85-USA GMD DOM
8. Morningview Converse Judy EX-93-USA GMD DOM
9. Morningview Aerostar Jix VG-87-USA
10. Walnutt Knoll Judy VG-87-USA GMD DOM

ARISTOCRAT uit een vernieuwende lijn van de Judy's!! Super kalf met geen fouten in haar index: +4.7 PL / +118 CFP / 2.0% SCE / +1.08 UDC en + 2707 GTPI. Haar volle zus test +2841 GTPI / 771 NM\$ en behoort tot de top NET MERIT vrouwelijke dieren van Europa. 10 generaties AB- of EXCELLENT ingeschreven moeders in de koestam.

ARISTOCRAT from a rare branch of the Judy's!! Great heifer with no holes: +4.7 PL / +118 CFP / 2.0% SCE / +1.08 UDC and + 2707 GTPI. Her full sisters tests +2841 GTPI / 771 NM\$ and belong to the top NET MERIT females in Europe. Backed by 10 generations Very Good or EXCELLENT scored dams!

Vijfde moeder: Applious Jet Stream Alda VG-85-USA DOM



4. M. Vision-Gen SH FRD A12276 EX-90-USA EX-MS DOM



Stamkoe: Morningview Converse Judy EX-93-USA GMD DOM

Christmas @ JK Eder TAG SALE

Beth Henger

15. 5 FEMALE EMBRYOS

#5 FEMALE Val-Bisson DOORMAN x Carf Emeraude EX-91 -NL

Method: IVF - Grade A - Direct Transfer

Location: The Netherlands

FEMALE Val-Bisson DOORMAN

(Bookem x Shottle x Goldwyn)

Carf Emeraude EX-91-NL

Conf. EX-91 -NL EX-91-MS

2.03 570d 17.721kgM 3.9% 694F 3.4% 601P
4.00 330d 15.317kgM 3.9% 598F 3.2% 482P
5.06 305d 15.930kgM 3.7% 589F 3.1% 497P

- **Champion 2-Yr. Old SPACE 2011**
- **1st Jr. 2-Yr. National Show Le Mans 2011**
- **6th in the finals at the Nat. NRM Show 2012**
- **Grand Champion Wintershow West-Brabant 2014**
- **The ONLY cow ALIVE with 6 EXCELLENT dtrs /**
De enige levende koe met 6 EXCELLENTE dtrs
- **>95.000kgM lifetime production /**
>95.000kgM levensproductie

Braedale GOLDWYN

Agathe VG-88-FR

Conf. VG-88-FR

2.03 305d 10.366kgM 3.2% 332F 3.1% 321P
3.06 305d 13.338kgM 3.5% 467F 3.1% 413P

- **3rd Sr. Cow at the Nat. Show Le Mans 2011**

Picston SHOTTLE

Toulouse VG-89-FR 2yr.

Conf. VG-89-FR 2yr.

2.02 305d 10.804kgM 4.0% 432F 3.2% 346P
3.11 305d 11.653kgM 4.3% 501F 3.2% 373P

- **Full sister to the proven bull Texas at Genes Diffusion /** Volle zus van de dochtergeteste stier Texas bij Genes Diffusion
- **Maternal sister to Umelin - Dam to the famous Amarante EX-90-FR /** Halfzus van Umelin - moeder van de bekende Amarante EX-90-FR

Volgende moeders

4. Rosière EX-90-FR
5. Menthe VG-89-FR
6. Ixias EX-93-FR
7. Eglantine EX-94-FR

Creëer uw show winnende pink of koe met GESEKSTE Doorman (Premier Sire WDE '19) embryo's uit Carf Emeraude EX-91-NL!! Uw mogelijkheid op een volle zus van JK DG Esmeralda EX-92-NL EX-94 uier!! Dezelfde familie als Amarante EX-FR - 2x Franse koe van het jaar.

Create your show winning cow or heifer with FEMALE Doorman (Premier Sire WDE '19) embryos from Carf Emeraude EX-91-NL!! The chance on a full sister to JK DG Esmeralda EX-92-NL EX-94-MS!! Same family as Amarante EX-FR - 2x French Cow of the Year!!



Volle zus van de embryo's: JK DG Esmeralda EX-92-NL



Sellasoe EX-90-BE - Aftershock x Emeraude

M. Carf Emeraude EX-91 -NL

Frans nationaal kampioene & super fokkoe!!



Christmas @ JK Eder TAG SALE

16. JK Eder DG **ELLY** 2 (A2A2)

NL 627397219 • 01.05.2020

GTPI index (12/20): +2.36 PTAT // +2.07 UDC // +1.7 PL / 2.82 SCS

Canadian index (12/20): +12 Conf. / +10 Mammary System / +8 Feet & Legs

Our-Favorite UPGRADE

(Crush x Atwood x Shottle)

JK Eder DG Unix Elly VG-85-NL 2yr.

Conf. VG-85-NL VG-85-MS 2yr.

1.11 124d 3.746kgM 3.6% 134F 2.7% 101P
1.11 305d 9.720kgM 3.8%F 2.9%P (proj.)

• Beautiful Unix 2-Yr Old with +2.27 PTAT of JK DG Esmeralda EX-92-NL EX-94-MS / Klasse Unix dochter met +2.27 PTAT uit JK DG Esmeralda EX-92-NL EX-94 uier

Croteau Lesperron UNIX

JK DG Esmeralda EX-92-NL EX-94-MS

Conf. EX-92-NL EX-94-MS

3.02 439d 15.325kgM 4.2% 649F 3.6% 550P
4.07 316d 13.230kgM 4.3% 564F 3.3% 440P
5.06 428d 13.780kgM 4.5% 620F 3.7% 512P

- 6th place European Show Libramont '19
- Udder Champion Noordeloos '18
- Res. Champion 2yr. Old National HHH Show '16
- Champion 2yr. Old Dairy Fair Mariënwaerd '16
- Res. Int. Champion Dairy Fair Mariënwaerd '17
- Res. Champion 2yr. Old Hoornaar '16

Val-Bisson DOORMAN

Carf Emeraude EX-91-NL

Conf. EX-91-NL

2.03 570d 17.721kgM 3.9% 694F 3.4% 601P
4.00 330d 15.317kgM 3.9% 598F 3.2% 482P
5.06 305d 15.930kgM 3.7% 589F 3.1% 497P

- Champion 2-Yr. Old SPACE 2011
- 1st Jr. 2-Yr. National Show Le Mans 2011
- 6th in the finals at the Nat. NRM Show 2012
- Grand Champion Wintershow West-Brabant 2014
- The ONLY cow ALIVE with 6 EXCELLENT dtrs / De enige levende koe met 6 EXCELLENTE dtrs

Volgende moeders

4. Agathe VG-88-FR
5. Toulouse VG-89-FR 2yr.
6. Rosière EX-90-FR
7. Menthe VG-89-FR
8. Ixias EX-93-FR
9. Eglantine EX-94-FR

NU is uw mogelijkheid! +2.36 PTAT / +12 Conf. UPGRADE kleindochter uit JK DG Esmeralda EX-92-NL EX-94 uier. Moeder is een klasse AB-85 2jr. UNIX dochter!! Esmeralda was 6de in, volgens velen, de sterkste klasse van de Europese show vorig jaar in Libramont.

NOW is your opportunity!! +2.36 PTAT / =12 Conf. UPGRADE grand daughter from JK DGEsmeralda EX-92-NL EX-94-MS. Dam is a beautiful VG-85 2yr. UNIX daughter!! Esmeralda was 6th in her section at the European Show in Libramont last year!!

Grootmoeder: JK DG Esmeralda EX-92-NL EX-94-MS

6de plaats Europese Show Libramont 2019 // foto genomen tijdens NRM 2019



M. JK Eder DG Unix Elly VG-85-NL VG-85-MS 2yr.



Nicht: JK Eder DG Edrea EX-90-NL EX-91-MS 4yr.
- Res. kampioene vaarzen Wintershow Noordeloos 2018



Christmas @ JK Eder TAG SALE

17. 4 EMBRYOS

#4 Walnutlawn SKYHIGH x JK Eder DG Unix Elly VG-85-NL VG-85-MS 2yr.

Method: ET - Grade A - Direct Transfer

Location: The Netherlands

Walnutlawn SKYHIGH incl. ETN

(Milehigh x Avalanche *RC x Alta5G)

JK Eder DG Unix Elly VG-85-NL 2yr.

Conf. VG-85-NL VG-85-MS 2yr.

1.11 124d 3.746kgM 3.6% 134F 2.7% 101P
1.11 305d 9.720kgM 3.8%F 2.9%P (proj.)

- Beautiful Unix 2-Yr Old with +2.27 PTAT of JK DG Esmeralda EX-92-NL EX-94-MS / Klasse Unix dochter met +2.27 PTAT uit JK DG Esmeralda EX-92-NL EX-94 uier

Croteau Lesperron UNIX

JK DG Esmeralda EX-92-NL EX-94-MS

Conf. EX-92-NL EX-94-MS

3.02 439d 15.325kgM 4.2% 649F 3.6% 550P
4.07 316d 13.230kgM 4.3% 564F 3.3% 440P
5.06 428d 13.780kgM 4.5% 620F 3.7% 512P

- 6th place European Show Libramont '19
- Udder Champion Noordeloos '18
- Res. Champion 2yr. Old National HHH Show '16
- Champion 2yr. Old Dairy Fair Mariënwaerd '16
- Res. Int. Champion Dairy Fair Mariënwaerd '17
- Res. Champion 2yr. Old Hoornaar '16

Val-Bisson DOORMAN

Carf Emeraude EX-91-NL

Conf. EX-91-NL

2.03 570d 17.721kgM 3.9% 694F 3.4% 601P
4.00 330d 15.317kgM 3.9% 598F 3.2% 482P
5.06 305d 15.930kgM 3.7% 589F 3.1% 497P

- Champion 2-Yr. Old SPACE 2011
- 1st Jr. 2-Yr. National Show Le Mans 2011
- 6th in the finals at the Nat. NRM Show 2012
- Grand Champion Wintershow West-Brabant 2014
- The ONLY cow ALIVE with 6 EXCELLENT dtrs / De enige levende koe met 6 EXCELLENTE dtrs

Volgende moeders

4. Agathe VG-88-FR
5. Toulouse VG-89-FR 2yr.
6. Rosière EX-90-FR
7. Menthe VG-89-FR
8. Ixias EX-93-FR
9. Eglantine EX-94-FR

Wat zoekt u nog meer dan deze super exterieur lijn? Super interessante embryo's van SKYHIGH (+3.07 PTAT) uit JK DG Unix Elly AB-85-NL 2jr. en dan JK DG Esmeralda EX-92-NL. Esmeralda was 6de in, volgens velen, de sterkste klasse van de Europese show afgelopen jaar in Libramont.

What do you prefer more in this exceptional type combination? Super hot embryos by SKYHIGH (+3.07 PTAT) from JK DG Unix Elly VG-85-NL 2yr. followed by JK DG Esmeralda EX-92-NL. Esmeralda was 6th in her section at the European Show in Libramont last year!!

Moeder van JK DG Unix Elly: JK DG Esmeralda EX-92-NL EX-94-MS

6de plaats Europese Show Libramont 2019 // foto genomen tijdens Europese show 2019



M. van donor: JK DG Esmeralda EX-92-NL EX-94-MS



M. JK Eder DG Unix Elly VG-85-NL VG-85-MS 2yr.



Alger Meekma

Christmas @ JK Eder TAG SALE

18. JK Eder DG Sillian **SILLY** 11

NL 680096386 • 05.08.2018 • Kalf datum: 17.11.2020 • Huidige dagproductie: 34,8 kgM
2.03 305d 9.319kgM 3.95%F 3.53%P (proj.)

Dukefarm SILLIAN

(Silver x Meridian x Freddie)

JK Eder DG Silly VG-85-NL VG-85-MS 2yr.

Conf. VG-85-NL VG-85-MS 2yr.

2.05 517d 12.679kgM 4.3% 547F 3.7% 474P
4.00 339d 9.031kgM 4.1% 374F 3.7% 335P
5.01 472d 16.311kgM 4.1% 670F 3.6% 593P
6.06 443d 13.242kgM 4.4% 577F 3.8% 500P

- VG Bookem daughter of Baxter SILVY / AB Bookem dochter van Baxter SILVY
- Sister to: JK Eder Silvy 1 former #2 gRZG Shamrock-daughter in Germany / Zus van JK Eder Silvy 1, voormalig #2 gRZG Shamrock dochter in Duitsland.



JK Eder DG Sillian Silly 11 | Zij wordt verkocht!

De-Su 521 BOOKEM

All.Nure Baxter Silvy EX-90-NL EX-MS 5yr.

Conf. EX-90-NL EX-MS 5yr.

2.00 305d 12.718kgM 3.8% 483F 3.2% 402P
5.04 305d 12.591kgM 3.9% 491F 2.9% 365P
7.00 542d 20.999kgM 3.9% 817F 3.3% 690P
8.08 305d 12.803kgM 2.7%F 3.1%P (proj.)

- Former #1 GTPI Cow in Europe!! / Voormalig #1 GTPI koe van Europa
- Snowman daughter was Champion Best Udder 2-Yr. Old Cremona '13 / Snowman dochter was Uier kampioene bij de vaarzen op de Nationale Show in Cremona '13

Emerald-Acr-Sa T-BAXTER

La Felce Seretta EX-91-IT

Conf. EX-91-IT

1.11 305d 13.843kgM 3.5% 485F 3.3% 461P
3.05 305d 10.223kgM 3.4% 348F 3.1% 316P
7.05 305d 17.145kgM 3.9% 674F 3.1% 523P

- s. Braedale GOLDWYN
- Family of: / De familie van Ashlar @ Semex

Volgende moeders

4. Aurora Nesta EX-91-IT
5. Morningview Bellwood July GP-USA
6. Morningview Converse Judy EX-93-USA GMD DOM
7. Morningview Aerostar Jix VG-87-USA
8. Walnutt Knoll Judy VG-87-USA GMD DOM
9. Walnutt-Knoll Rorae Jenny EX-91-USA GMD DOM

Dukefarm SILLIAN kleindochter van de voormalig #1 GTPI koe van Europa & EX-Baxter dochter: All.Nure Baxter Silvy EX-90-NL. Vaars die net vers is en klaar om te produceren in uw veestapel. Diepe Noord-Amerikaanse koe familie die terugvoert op Morningview Converse Judy EX-93-USA GMD DOM.

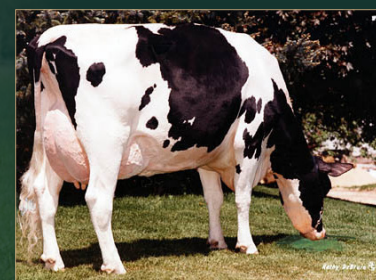
Dukefarm SILLIAN grand daughter to the former #1 GTPI cow in Europe and EX-Baxter daughter: All.Nure Baxter Silvy EX-90-NL! 2yr. Old which is ready to rock and produce in your herd! From origin deep American cow family tracing back to Morningview Converse Judy EX-93-USA GMD DOM.

Gr. Moeder: All. Nure Baxter Silvy *CV EX-90-NL EX-MS 5yr.

Voormalig #1 GTPI koe van Europa



Moeder: JK Eder DG Silly VG-85-NL VG-85-MS
Voormalig top 20 GTPI koe in Europa



Stammoeder: Morningview Converse Judy EX-93-USA GMD DOM

Christmas @ JK Eder TAG SALE

Alex Arkink

19. JK Eder DG Carf **EMERAUDE** 2

NL 694526501 • 09.09.2020

Val-Bisson **DOORMAN**

(Bookem x Shottle x Goldwyn)

Carf Emeraude **EX-91-NL**

Conf. EX-91 -NL EX-91 -MS

2.03 570d 17.721kgM 3.9% 694F 3.4% 601P
4.00 330d 15.317kgM 3.9% 598F 3.2% 482P
5.06 305d 15.930kgM 3.7% 589F 3.1% 497P

- **Champion 2-Yr. Old SPACE 2011**
- **1st Jr. 2-Yr. National Show Le Mans 2011**
- **6th in the finals at the Nat. NRM Show 2012**
- **Grand Champion Wintershow West-Brabant 2014**
- **The ONLY cow ALIVE with 6 EXCELLENTE dtrs / De enige levende koe met 6 EXCELLENTE dtrs**
- **>95.000kgM lifetime production / >95.000kgM levensproductie**

Braedale **GOLDWYN**

Agathe **VG-88-FR**

Conf. VG-88-FR

2.03 305d 10.366kgM 3.2% 332F 3.1% 321P
3.06 305d 13.338kgM 3.5% 467F 3.1% 413P

- **3rd Sr. Cow at the Nat. Show Le Mans 2011**



JK Eder Emeraude 2 | Zij wordt verkocht!

Picston **SHOTTLE**

Toulouse **VG-89-FR 2yr.**

Conf. VG-89-FR 2yr.

2.02 305d 10.804kgM 4.0% 432F 3.2% 346P
3.11 305d 11.653kgM 4.3% 501F 3.2% 373P

- **Full sister to the proven bull Texas at Genes Diffusion / Volle zus van de dochtergeteste stier Texas bij Genes Diffusion**
- **Maternal sister to Umelin - Dam to the famous Amarante EX-90-FR / Halfzus van Umelin - moeder van de bekende Amarante EX-90-FR**

Volgende moeders

4. Rosière EX-90-FR
5. Menthe VG-89-FR
6. Ixias EX-93-FR
7. Eglantine EX-94-FR

Doorman - Premier Sire WDE 2019 direct uit de enige echte Carf Emeraude EX-91-NL. De enige levende koe in Europa met 6 EXCELLENTE dochters. De kans op een volle zus van JK DG Esmeralda EX-92-NL EX-94 uier!! Dezelfde familie als Amarante EX-FR - 2x Franse koe van het jaar!!

Doorman - Premier Sire WDE 2019 straight out of the 'one and only' Carf Emeraude EX-91-NL!! The ONLY cow alive with 6 EXCELLENTE dtrs in Europe. The chance on a full sister to JK DG Esmeralda EX-92-NL EX-94-MS!! Same family as Amarante EX-FR - 2x French Cow of the Year!!



Volle zus: JK DG Esmeralda EX-92-NL



Halfzus: Sellasoe EX-90-BE
Aftershock x Carf Emeraude

M. Carf Emeraude **EX-91-NL**

Frans nationaal kampioene & super fokkoe!!

Christmas @ JK Eder TAG SALE

20. JK Eder DG **ESMERALDA** 9

NL 657997359 • 02.08.2020

GTPI index (12/20): +2.30 PTAT // +1.30 UDC // +0.70 FLC // +0.05%F / +0.04%P

Canadian index (12/20): +12 Conf. / +12 Mammary System / +6 Feet & Legs

BOVO BOMBA

(Doorman x Superstition x Justice)

JK Eder DG Esmeralda I VG-89-NL EX-MS

Conf. VG-89-NL EX-90-MS 4yr.

2.00 472d 11.873kgM 4.3% 515F 3.5% 415P
3.04 336d 12.621kgM 4.0% 508F 3.6% 453P
4.04 305d 10.363kgM 4.5%F 3.7%P (proj.)

- **Maternal sister to:** / Halfzus van:
JK Eder DG Unix Elly VG-85-NL VG-88-MS 2yr.
- **3.7% PROTEIN** / 3.7% EIWIT
- **VG-89-NL Monterey dtr with EXCELLENT Mammary System from Esmeralda!** / AB-89-NL Monterey dtr met een EXCELLENT uier uit Esmeralda!

View-Home MONTEREY

JK DG Esmeralda EX-92-NL EX-94-MS

Conf. EX-92-NL EX-94-MS

2.02 323d 8.888kgM 4.3% 382F 3.5% 311P
3.02 439d 15.325kgM 4.2% 649F 3.6% 550P
4.07 316d 13.230kgM 4.3% 564F 3.3% 440P
5.06 428d 13.780kgM 4.5% 620F 3.7% 512P

- **6th place European Show Libramont '19**
- **Udder Champion Noordeloos '18**
- **Res. Champion 2yr. Old National HHH Show '16**
- **Champion 2yr. Old Dairy Fair Mariënwaerd '16**
- **Res. Int. Champion Dairy Fair Mariënwaerd '17**
- **Res. Champion 2yr. Old Hoornaar '16**
- **1st Intermediate Class National NRM Show '17**

Val-Bisson DOORMAN

Carf Emeraude EX-91-NL

Conf. EX-91-NL

2.03 570d 17.721kgM 3.9% 694F 3.4% 601P
4.00 330d 15.317kgM 3.9% 598F 3.2% 482P
5.06 305d 15.930kgM 3.7% 589F 3.1% 497P

- **Champion 2-Yr. Old SPACE 2011**
- **1st Jr. 2-Yr. National Show Le Mans 2011**
- **6th in the finals at the Nat. NRM Show 2012**
- **Grand Champion Wintershow West-Brabant 2014**
- **The ONLY cow ALIVE with 6 EXCELLENT dtrs / De enige levende koe met 6 EXCELLENTE dtrs**

Volgende moeders

4. Agathe VG-88-FR
5. Toulouse VG-89-FR 2yr.
6. Rosière EX-90-FR
7. Menthe VG-89-FR
8. Ixias EX-93-FR
9. Eglantine EX-94-FR

Deze prachtige BOVO BOMBA (de #1 Conformation stier in Canada) kleindochter van JK DG Esmeralda EX-92-NL wordt verkocht!! Moeder is een AB-89-NL met EXCELLENT uier ingeschreven Monterey dochter. Haar overgrootmoeder Carf Emeraude was Frans Nationaal kampioene als vaars!! Dezelfde familie als Amarante EX-FR - 2x Franse koe van het jaar.

This pretty BOVO BOMBA (the #1 Conformation bull in Canada) grand dtr to JK DG Esmeralda EX-92-NL sells!! Dam is a VG-89-NL Monterey with an EXCELLENT mammary system! Her great-grand dam Carf Emeraude was French National Champion as a 2yr. Old!! Same family as Amarante EX-FR - 2 x French Cow of the Year.



M. JK Ede DG Esmeralda 1 VG-89-NL EX-MS 4yr.



Dezelfde familie: Capj Irana
- 1ste @ Europese Show Colmar '16 & Frans Nationaal kampioene

Grootmoeder: JK DG Esmeralda EX-92-NL EX-94-MS
6de plaats Europese show Libramont 2019

Christmas @ JK Eder TAG SALE

21. 3 EMBRYOS

#3 Coomboona Zipit MIRAND PP *RC x Luck-E Redburst Aphrodite VG-87-NL 3yr.

Method: ET - Grade A - Direct Transfer

Location: The Netherlands

Coomboona Zipit MIRAND PP *RC

(Zipit-P x Kingboy x Ladd P-Red)

Luck-E Redburst Aphrodite VG-87-NL 3yr.

Conf. VG-87-NL 3yr.

2/2La 289d 11.065kgM 3.6% 396F 3.1% 338P
HL2 305d 12.425kgM 3.7% 460F 3.0% 368P

- **One of the greatest R&W 2-Yr. Olds in Europe**
Een van de beste RODE vaarzen in Europa
- **Top 5 R&W 2yr. old Swiss Expo Lausanne '16**
- **Res. All-German R&W 2-Yr Old 2016**
- **1st place Schau der Besten '16, between B&W's**
- **Dam to:** / Moeder van: Loh TJ Alessja VG-89-DE
- Grand Champion German Dairy Show 2019
- Int. & Grand Champion Schau der Besten '19
- 2nd place European Show Libramont '19
- 2yr. Old Champion Schau der Besten '18
& Loh DICE-RED @ Masterrind
& LOH TJ Alaska Red VG-86-DE 2yr.
- 4th place German Dairy Show '19 & 1st place
Emslandtierschau '19 (between B&W's)

Lookout P REDBURST-RED

Luck-E Advent Atlanta *RC EX-94-USA 2E

Conf. EX-94-USA 2E

2-04 2x 349d 12.143kgM 4.0% 490F 3.0% 364P
3-05 2x 365d 17.599kgM 3.9% 694F 3.0% 533P
5-03 2x 365d 18.044kgM 3.7% 668F 3.0% 545P

- **Full sister is dam to:** / Volle zus is moeder van:
AWESOME RED & ADONIS RED!

KHW Kite ADVENT-RED

Luck-E Blitz Australia VG-87-USA GMD DOM

Conf. VG-87-USA GMD DOM

2-02 2x 365d 17.232kgM 4.0% 693F 3.0% 513P

- **Full sister to Australia EX-90-USA 2E /**
Volle zus van Australia EX-90-USA 2E

Volgende moeders

4. Luck-E Skychief Arizona EX-90-USA GMD DOM
5. Hart-Lyn Starbuck Ashley EX-94-USA 2E GMD DOM
6. Kachina Valiant Act VG-86-USA
7. Dodeb Matt Actress EX-93-USA 3E
8. Lamkinland B Matt Actress VG-85-USA VG-85-USA

Deze MIRAND PP *RC embryo's zijn de investering dubbel en dwars waard!! Ceëer een fantastische halfzus van de regerend Duits Nationaal kampioene: ALESSJA!! Donor Aphrodite was in de top 5 bij de vaarzen op de Swiss Expo 2016. Direct uit de allerbeste families bij Luck-E Holsteins, V.S.

These MIRAND PP *RC embryos are about as close to the real deal as they come!! Create an unbelievable maternal sister to the reigning German National Champion: ALESSJA!! Dam was top 5 placed 2-Yr Old at Swiss Expo 2016. Straight out of the heart of Luck-E Holsteins, USA.

Halfzus van embryo's: Loh TJ Alessja VG-89-DE EX-MS
Reigning German National Champion



Donor: Luck-E Redburst Aphrodite VG-87-NL 3yr.
Top 5 Swiss Expo Lausanne, 2016



2. M. Luck-E Advent Atlanta *RC EX-94-USA 2E



Wolfhard Schulze

Christmas @ JK Eder TAG SALE

22. 3 EMBRYOS

#3 No-Pe ZEKON x Vekis DG Linny VG-88-NL VG-89-MS 2yr. (+2498 GTPI)

Method: ET - Grade A - Direct Transfer

Location: The Netherlands

No-Pe ZEKON

(Superhero x Yoder x Supersire)

Vekis DG Linny VG-88-NL VG-89-MS 2yr.

Conf. VG-88-NL VG-89-MS 2yr.

2.02 244d 8.412kgM 4.3% 358F 3.5% 298P
2.02 305d 10.371kgM 4.2%F 3.6%P (proj.)

- **VG-88-NL 2yr. VG-89-MS (MAX) scored Bourbon dtr of Lakeside Silver Lilly!!** / AB-88 punten vaars met AB-89 uier (MAX) van Bourbon uit Lakeside Silvery Lilly!!
- **Deep American cow family, going back on Beachlawn Blwood L Lilly EX-93-USA!!!** / Diepe Amerikaanse koe familie terugvoerend op Beachlawn Blwood L Lilly EX-93-USA!!!

Wa-Del ABS BOURBON

Lakeside Silver Lilly

Conf. N.C.

- **Died after calving** / Gestorven na kalven
- **The former #3 GTPI heifer (>9 months in Europe)** / De voormalige #3 GTPI pink (>9 maanden in Europa)
- **Former top 10 GTPI Silver dtr World Wide** / Voormalig top 10 GTPI Silver dtr wereldwijd

Seagull-Bay SILVER

CNN H Liner Lillie VG-85-NL

Conf. VG-85-NL

2.05 305d 10.513kgM 4.4% 465F 3.6% 375P
4.00 305d 11.475kgM 4.7%F 3.6%P

- **Former #1 GTPI Headliner daughter in Europe** / Voormalig #1 GTPI Headliner dochter in Europa
- **Topseller Tulip Sale '13** / Veilingtopper Tulip Sale '13
- **Different pedigree: Headliner x Shot AI x Ramos** / Andere vaderlijn: Headliner x Shot AI x Ramos

Volgende moeders

4. Richmond-FD AI Lorelei-ET EX-90-USA
5. Richmond-FD Liesl-ET EX-90-USA
6. Markland O-Man Lisa VG-86
7. Muranda Bwm Latin VG-87-USA
8. Beachlawn Blwood L Lilly EX-93-USA 2E GMD DOM
9. Beachlawn Bellwood Tammy VG-86-USA GMD DOM
10. Beachlawn Bell Pro Tammy VG-89-USA DOM
11. Beachlawn Bell Cleitus Pro EX-93-USA 3E GMD DOM

WOW!! Zekon embryo's direct uit de 88-punten vaars Vekis DG Linny AB-88-NL AB-89 uier (MAX-score) 2jr. Moeder is de voormalige top 10 GTPI Silver dochter in de WERELD!
11 generaties AB- of EXCELLENT ingeschreven moeders terugvoerend op Beachlawn Blwood L Lilly EX-93-USA 2E GMD DOM.

WOW!! Zekon embryos directly from the sky-high scored 2-Yr Old Vekis DG Linny VG-88-NL VG-89-MS (MAX-score) 2yr. Dam is the former top 10 GTPI Silver dtr in the WORLD!
11 generations VG- or EXCELLENT dams backed by Beachlawn Blwood L Lilly EX-93-USA 2E GMD DOM.

4. M. Richmond-FD AI Lorelei EX-90-USA

Moeder van Lotus @ Semex en St-Louis @ Select Sires



M. Vekis DG Linny VG-88-NL VG-89-MS 2yr.



Foundation cow: Beachlawn Blwood L Lilly EX-93-USA 2E GMD DOM

Christmas @ JK Eder TAG SALE

23. 4 FEMALE EMBRYOS

#4 FEMALE Blondin THUNDER STORM x JK Eder Esther

Method: ET - Grade A - Direct Transfer

Location: The Netherlands

FEMALE Blondin THUNDER STORM

(Jacoby x Beemer x Bolton)

JK Eder Esther

- **INCREDIBLE** type heifer with +2.96 PTAT / +12 Conf. (12/20) / Imponerende pink met + PTAT / +12 Conf. (12/20)

Our-Favorite UNDENIED

JK Eder DG Eliza VG-89-NL VG-89-MS 3yr.

Conf. VG-89-NL VG-89-MS 3yr.

2.05 354d 11.802kgM 3.7% 437F 3.5% 417P
3.06 305d 11.877kgM 3.6%F 3.5%P (proj.)

- **3rd place and at final 6 HHH-Show 2019** / 3rde plaats en bij laatste 6 HHH-Show 2019
- **2yr. Old Champion Hoornaar 2019**
- **Top ranking PTAT cow in Europe (>2yr), PTAT +2.37 with >390 Milk, good health traits & <2.5% SCE** / Top PTAT koe in Europa (>2jr), PTAT +2.37 met >390 melk en super gezondheidskenmerken

OH-River-Syc BYWAY

JK Eder DG Elisa VG-87-NL VG-88-MS 2yr.

Conf. VG-87-NL VG-88-MS 2yr.

2.01 305d 8.892kgM 4.4% 391F 3.8% 339P
3.06 305d 11.163kgM 4.8% 535F 3.8% 535P

- **3.8% PROTEIN** / 3.8% EIWIT
- **Halfzus van:** / Maternal sister to DG JK Eder Edrea EX-90-NL EX-91-MS 4yr. - Res. 2-Yr Old Champion Wintershow Noordeloos 2018
- **Great production & transmitting cow** / Geweldige productie en fokkoe

Volgende moeders

4. JK Eder Emeraude 2 VG-88-NL
5. Carf Emeraude EX-91-NL
6. Agathe VG-88-FR
7. Toulouse VG-89-FR 2yr.
8. Rosière EX-90-FR
9. Menthe VG-89-FR
10. Ixias EX-93-FR

Klasse exterieur embryo's van THUNDERSTORM (+3.38 PTAT) uit de Undenied dochter van de MAX-ingeschreven 3 jarige in Nederland en vaarzenkampioene Fokveedag Hoornaar 2019 wordt verkocht!! Een diepe Franse koe familie die terug voert of de fameuze fokkoe Carf Emeraude EX-91-NL. Dezelfde familie als Capj Irana - 1ste op de Europese Show in Colmar 2016 en Frans Nationaal kampioene.

HUGE TYPE embryos by THUNDERSTORM (+3.38 PTAT) from the Undenied dtr of the MAX-scored 3-Yr Old in the Netherlands and 2-Yr Old Champion Fokveedag Hoornaar 2019 sells!! Deep French cow family tracing back to the breeding phenomenon Carf Emeraude EX-91-NL. The same family as Capj Irana - 1st @ European Show Colmar '16 & French National Champion.

Donor: JK Eder Esther



M. JK Eder DG Byway Eliza VG-89-NL 3yr. (MAX)
Regerend vaarzenkampioene Fokveedag Hoornaar '19



2. M. JK Eder Emeraude 2 VG-88-NL VG-89-MS 2yr.

Christmas @ JK Eder TAG SALE

24. JK Eder **EVALYN 1**

NL 680096502 • 21.10.2018

• Geïnsmineerd met DG DV SIMAX op 29.04.2020

DRACHTIG / PREGNANT

GTPI index (12/20): +2626 GTPI // 542 NM\$ // +1.04 PTAT // +1030 Milk // 0.08%F // 0.04%P

ABS MEDLEY

(Yoder x Balisto x O-Style)

JK Eder Evalyn VG-87-NL La1

Conf. VG-87-NL VG-88-MS La1

2.06 542d 16.506kgM 4.5% 749F 3.7% 611P
2.06 305d 10.742kgM 4.1%F 3.5%P (proj.) LW113

- **1st place Dairy Fair Mariënwaerdt '19** /
1ste in haar klasse op de Dairy Fair Mariënwaerdt '19
- **3.7% PROTEIN / 3.7% EIWIT**

S-S-I Montross JEDI

JK Eder Eva I VG-88-NL EX-MS 4yr.

Conf. VG-88-NL EX-MS 4yr.

2.05 443d 11.751kgM 5.1% 597F 3.7% 429P
3.09 421d 14.286kgM 5.1% 734F 3.7% 533P

- **Extraordinary production cow: >14.000kgM with 3.7% PROTEIN / Fantastische productie koe: >14.000kgM met 3.7% EIWIT**

L-L-M Dairy PRESIDENT

HS Mogul Eva GP-84-NL VG-88-MS 2yr.

Conf. GP-84-NL VG-88-MS 2yr.

2.02 305d 8.514kgM 4.6% 391F 3.6% 307P

- s. Mountfield SSI Dcy **MOGUL**

Volgende moeders

4. Royal Idevra Eva VG-86-IT 2yr.
5. Royal Idevra Titanic Estate EX-90-IT
6. Royal Idevra Eгна TV VG-85-IT 2yr.
7. Excelgen Manfred Brooke VG-86-USA 1st La DOM
8. Ricecrest Duster Brooke EX-90-USA GMD DOM
9. Ricecrest Luke Lauren EX-91-USA GMD DOM
10. Ricecrest Southwind Kaye VG-87-USA GMD DOM
11. Ricecrest Ned Boy Noreen EX-91 -2E-USA GMD DOM
12. Ricecrest Jemini Jayanna VG-87-USA DOM
13. Ricecrest Elevation Ella VG-86-USA DOM

+2626 GTPI & 542 NM\$ MEDLEY dochter van de rubriekswinnares Dairy Fair Mariënwaerdt '19: JK Eder Evalyn AB-87-NL AB-88 uier La1. Imponerende vaars van JEDI met een vaarzenlijst van >16.000kgM met 3.7% EIWIT! Familie met 12 generaties AB of EX-moeders terugvoerend op Royal Idevra Titanic Estate EX-90-IT.

+2626 GTPI & 542 NM\$ MEDLEY daughter of the classwinner Dairy Fair Mariënwaerdt '19: JK Eder Evalyn VG-87-NL VG-88-MS La1. Extraordinary 2-Yr Old by JEDI which produced over 16.000kgM with 3.7% PROTEIN!! Family with 12 generations VG- or EX-dams tracing back to Royal Idevra Titanic Estate EX-90-IT.

Moeder: JK Eder Evalyn VG-87-NL VG-88-MS La1

1ste plaats in haar rubriek op de Dairy Fair Mariënwaerdt '19



Moeder: JK Eder Evalyn VG-87-NL VG-88-MS La1



5. M. Royal Idevra Titanic Estate EX-90-IT

25. JK Eder DG **CARMEN** 8 (A2A2)

NL 657997241 • 27.05.2020

GTPi index (12/20): +2.48 PTAT // +1.69 UDC // +1.07 FLC // +188 Milk

Canadian index (12/20): +13 Conf. / +12 Mammary System / +9 Feet & Legs

COL DG CRUSHTIME

(Crush x Mogul x Meridian)

JK Eder DG Carmen 2 VG-85-NL 2yr.

Conf. VG-85-NL VG-87-MS 2yr.

2.03 278d 7.501kgM 3.7% 281F 3.2% 242P

- One of the highest Conformation cows in Europe: Conf. +13 (12/20) / Eén van de hoogste exterieur koeien op Conformation in Europa: Conf. +13 (12/20)

Walnutlawn SOLOMON

DG JK Eder Carmen NC

Conf. NC

La1 380d 8.575kgM 3.9% 338F 3.4% 289P

La2 305d 8.469kgM 3.7%F 3.2%P (proj.)

- Atwood daughter from one of the greatest young cows in Europe / Atwood dochter uit één van de beste jonge koeien van Europa!
- The former #5 PTAT Atwood dtr in Europe! / Voormalig #5 PTAT Atwood van Europa!!

Maple-Downs I GW ATWOOD

JK DG Esmeralda EX-92-NL EX-94-MS

Conf. EX-92-NL EX-94-MS

3.02 439d 15.325kgM 4.2% 649F 3.6% 550P
4.07 316d 13.230kgM 4.3% 564F 3.3% 440P
5.06 428d 13.780kgM 4.5% 620F 3.7% 512P

- 6th place European Show Libramont '19
- Udder Champion Noordeloos '18
- Res. Champion 2yr. Old National HHH Show '16
- Champion 2yr. Old Dairy Fair Mariënwaerd '16
- Res. Int. Champion Dairy Fair Mariënwaerd '17
- Res. Champion 2yr. Old Hoornaar '16

Volgende moeders

4. Carf Emeraude EX-91-NL
5. Agathe VG-88-FR
6. Toulouse VG-89-FR 2yr.
7. Rosière EX-90-FR
8. Menthe VG-89-FR
9. Ixias EX-93-FR
10. Eglantine EX-94-FR

SHOW SHOW SHOW! Dit schitterende kalf met +2.48 PTAT / +13 Conf. voert terug met een geweldige vaderlijn: Crushtime x Solomon x Atwood op de 6de geplaatste koe op de Europese show in Libramont '19: JK DG Esmeralda EX-92-NL!! Diepe Franse koe familie die vele succesvolle showkoeien voortbracht.

SHOW SHOW SHOW! Great heifer with +2.48 PTAT / +13 Conf. which traces over an amazing sire stack: Crushtime x VG-85 2yr. Solomon x Atwood back to the 6th placed European Show '19 cow: JK DG Esmeralda EX-92-NL!! Deep French cow family with several show winning dams!!

Moeder: JK Eder DG Carmen 2 VG-85-NL VG-87-MS 2yr.
Top PTAT & Conformation koe van Europa! (12/20)



Grootmoeder: JK DG Esmeralda EX-92-NL EX-94-MS



Dezelfde familie: Amarante EX-FR
- 2x Frans koe van het jaar!!



Christmas @ JK Eder TAG SALE

26. JK Eder DG **CARMEN** 10

NL 657997296 • 09.06.2020

GTPi index (12/20): +2.91 PTAT // +2.02 UDC // +1.33 FLC // +0.16 Rump Angle

Canadian index (12/20): +15 Conf. / +12 Mammary System / +10 Feet & Legs

COL DG CRUSHTIME

(Crush x Mogul x Meridian)

JK Eder DG Carmen 2 VG-85-NL 2yr.

Conf. VG-85-NL VG-87-MS 2yr.

2.03 278d 7.501kgM 3.7% 281F 3.2% 242P

- One of the highest Conformation cows in Europe: Conf. +13 (12/20) / Eén van de hoogste exterieur koeien op Conformation in Europa: Conf. +13 (12/20)

Walnutlawn SOLOMON

DG JK Eder Carmen NC

Conf. NC

La1 104d 2.863kgM 3.8% 108F 3.1% 89P

La1 305d 7.773kgM 4.1%F 3.4%P (proj.)

- Atwood daughter from one of the greatest young cows in Europe / Atwood dochter uit één van de beste jonge koeien van Europa!
- The former #5 PTAT Atwood dtr in Europe! / Voormalig #5 PTAT Atwood van Europa!!

Maple-Downs I GW ATWOOD

JK DG Esmeralda EX-92-NL EX-94-MS

Conf. EX-92-NL EX-94-MS

2.02 323d 8.888kgM 4.3% 382F 3.5% 311P
3.02 439d 15.325kgM 4.2% 649F 3.6% 550P
4.07 316d 13.230kgM 4.3% 564F 3.3% 440P
5.06 428d 13.780kgM 4.5% 620F 3.7% 512P

- 6th place European Show Libramont '19
- Udder Champion Noordeloos '18
- Res. Champion 2yr. Old National HHH Show '16
- Champion 2yr. Old Dairy Fair Mariënwaerd '16
- Res. Int. Champion Dairy Fair Mariënwaerd '17
- Res. Champion 2yr. Old Hoornaar '16

Volgende moeders

4. Carf Emeraude EX-91-NL
5. Agathe VG-88-FR
6. Toulouse VG-89-FR 2yr.
7. Rosière EX-90-FR
8. Menthe VG-89-FR
9. Ixias EX-93-FR
10. Eglantine EX-94-FR

Hoog in de lijst geplaaste CRUSHTIME dtr met +2.91 PTAT / +15 Conf. Crushtime x AB-85 2jr. Solomon x Atwood gevolgd door de succesvolle keuringskoe JK DG Esmeralda EX-92-NL!! Diepe Franse koe familie die onder andere de 2x Franse koe van het jaar bracht: AMARANTE EX-FR.

Chart topping CRUSHTIME at +2.91 PTAT/ +15 Conf. Crushtime x VG-85 2yr. Solomon x Atwood followed by the show winning JK DG Esmeralda EX-92-NL!! Deep French cow family from the same family as the 2x French Cow of the Year: AMARANTE EX-FR.

Derde moeder: JK DG Esmeralda EX-92-NL EX-94-MS

6de plaats Europese show Libramont 2019 & Res. kampioene vaarzen HHH-Show '16



M. JK DG Carmen 2 VG-85-NL VG-87-MS 2yr.



Dezelfde familie: Capj Irana
- rubriekswinnares Europese Show Colmar 2016



Han Hopman

Christmas @ JK Eder TAG SALE

27. 1st Choice FEMALE

JK Eder DG Brylis • NL 657997474 • 27.09.2020 • GTPI index (12/20): +2518 GTPI // 364 NM\$ // +2.26 PTAT
JK Eder DG Brianna • NL 657997481 • 27.09.2020 • GTPI index (12/20): +2465 GTPI // 321 NM\$ // +2.23 PTAT

Mr Frazzled ARISTOCRAT

(Frazzled x Monterey x Mogul)

Col DG Brylan GP-83-DE 2yr.

Conf. GP-83-DE GP-84-MS 2yr.

TL19/07 200d 5.804kgM 4.0% 230F 3.6% 211P

- **Top Conformation cow in the breed: +13 Conf. / +11 Mammary System / +9 Feet & Legs (12/20) /** Top Conformation koe van het ras: +13 Conf. / +11 Mammary System / +9 Feet & Legs (12/20) /
- **Full sister to:** / Volle zus van: Col DG Brylis VG-86-DE 2yr - dam to Kingmaster @ Masterrind.
- **Her sire Crush is not available in Europe /** Haar vader Crush is niet beschikbaar in Europa

Maverick CRUSH

Oh-River-Syc Mogal Brylan VG-87-USA 4yr.

Conf. VG-87-USA 4yr.

2/2La 305d 12.983kgM 3.3% 425F 2.9% 370P
HL1 305d 13.604kgM 3.4% 467F 2.8% 381P

- **Dam to:** / Moeder van: CRUSHTIME @ ST Genetics & CRUSHABULL @ Semex
- **Same family as: / Dezelfde familie als:**
Butz-Butler Gold Barbara EX-96-USA 3E GMD
- Grand Champion World Dairy Expo 2019
- 3x classwinner at World Dairy Expo, Madison
- 1st North American Open Holstein Show '20

Mountfield SSI DCY MOGUL-ET

Oh-River-Syc Mrdn Billie EX-91-USA 4yr.

Conf. EX-91-USA 4yr.

2-01 3x 365d 12.628kgM 3.2% 407F 3.0% 375P
HL2 305d 12.152kgM 3.2% 392F 2.9% 347P

- **s. Sully Hart MERIDIAN-ET**
- **Full sister to:** / Volle zus van: BYWAY @ Semex!

Volgende moeders

4. Sandy-Valley Atwd Barbie EX-91-USA 5yr.
5. Regancrest Bryanna EX-91-USA GMD 3*
6. Regancrest-PR Barbie EX-92-USA GMD DOM
7. Regancrest Juror Brina EX-92-USA
8. Regancrest Aerostar Bert EX-90-USA GMD DOM
9. Regancrest Mark Chairman Bea EX-91-USA 2E GMD
10. Regancrest Board Chairman Bea EX-90-USA

Deze Aristocrat dochters zijn het!! Directe dochters uit de volle zus van Crushtime @ ST-Gen & Crushabull @ Semex. Dezelfde familie als de regerend algemeen kampioene World Dairy Expo 2019: Butz-Butler Gold Barbara EX-96. Terugvoerend op BARBIE!

These Aristocrat dtrs can let you in!! Direct dtrs from the full sister to Crushtime @ ST-Gen & Crushabull @ Semex. Same family as the Grand Champion World Dairy Expo 2019: Butz-Butler Gold Barbara EX-96. Backed by BARBIE!

Volle zus moeder: Col DG Brylan VG-86-DE 2yr.
Moeder van Kingmaster @ Masterrind



Wolfhard Schulze



M. Col DG Brylan GP-83-DE GP-84-MS 2yr.



Dezelfde familie: Butz-Butler Gold Bar EX-96-USA 3E GMD
- Grand Champion World Dairy Expo 2019

Christmas @ JK Eder TAG SALE

28. JK Eder **HOINE** 6

NL 627396735 • 10.05.2019

• Geïnsimineerd met Stantons CHIEF op 14.12.2020

GTPI index (12/20): +2606 GTPI // 551 NM\$ // +0.72 PTAT // +810 Milk // 0.11%F // +4.6 PL

Hurtgenlea Richard **CHARL**

(Charley x Yoder x Supersire)

JK Eder Hoine 4 VG-89-NL VG-89-MS 3yr.

Conf. VG-89-NL VG-89-MS 3yr.

2.01 336d 11.583kgM 3.9% 446F 3.3% 378P
3.01 305d 12.143kgM 3.8%F 3.5%P (proj.)

- **2nd place 2-Yr Old Fokveedag Hoornaar 2019** / 2de plaats Fokveedag Hoornaar 2019
- **Interesting sire stack: MONTANA x SPRING** / Interessante vaderlijn: MONTANA x SPRING
- **MAX-scored 3-Yr Old in the Netherlands** / MAX-ingeschreven 3 jarige in Nederland

IHG MONTANA

JK Eder Hoine 2 VG-85-NL 2yr.

Conf. VG-85-NL 2yr.

2.03 358d 9.698kgM 4.1% 397F 3.6% 345P
3.04 394d 14.839kgM 3.9% 580F 3.5% 516P

- **Donor dam** / Stiermoeder
- **Daughter of the successfully dtr proven SPRING** / Dochter van de succesvolle dochtergeteste stier SPRING

Westenrade **ALTASPRING**

LJ Uno Hoine NC

Conf. NC

2.09 305d 8.197kgM 4.13% 339F 3.52% 289P
3.11 305d 10.113kgM 4.24% 429F 3.52% 356P

- **s. Amighetti NUMERO UNO**

Volgende moeders

4. LJ Explosive VG-86-FR VG-87-MS 2yr.
5. LJ Cigale VG-86-FR VG-88-MS 3yr.
6. LJ Very Best GP-83-FR 2yr.
7. Sister CV VG-89-FR 2yr.
8. Paraffine EX-90-FR
9. Peckenstein Luke Kirsten EX-91-USA GMD DOM
10. Peckenstein Beatrice Kay VG-87-USA GMD DOM

Geweldige index pink van Charl met +2606 GTPI & 551 NM\$ in combinatie met +0.72 PTAT. Een directe dochter uit de MAX-ingeschreven 3 jarige en 2de geplaatste op de Fokveedag Hoornaar 2019: JK Eder Hoine 4 AB-89-NL AB-89 uier 3jr. (MAX)

Great index heifer by CHARL at + 2606 GTPI & 551 NM\$ in combination with +0.72 PTAT. Direct daughter of the 2nd placed 2-Yr Old Fokveedag Hoornaar 2019 & MAX-scored 3yr. Old in the Netherlands: JK Eder Hoine 4 VG-89-NL VG-89-MS 3yr. (MAX)

Moeder: JK Eder Hoine 4 VG-89-NL VG-89-MS 3yr. (MAX)
2de plaats Fokveedag Hoornaar 2019



Alex Arkink



4. M. LJ Explosive VG-86-FR VG-87-MS 2yr.



Volle zus van 5. M. LJ Cigale VG-88-FR

Christmas @ JK Eder TAG SALE

29. 4 FEMALE EMBRYOS

#4 FEMALE Farnear DELTA-LAMBDA x Carf Emeraude EX-91 -NL

Method: IVF - Grade A - Direct Transfer

Location: The Netherlands

FEMALE Farnear DELTA-LAMBDA

(Delta x Numero Uno x Snowman)

+2745 GTPI // +2.77 UDC // +2.61 PTAT

Carf Emeraude EX-91 -NL

Conf. EX-91 -NL EX-91 -MS

2.03 570d 17.721kgM 3.9% 694F 3.4% 601P
4.00 330d 15.317kgM 3.9% 598F 3.2% 482P
5.06 305d 15.930kgM 3.7% 589F 3.1% 497P

- **Champion 2-Yr. Old SPACE 2011**
- **1st Jr. 2-Yr. National Show Le Mans 2011**
- **6th in the finals at the Nat. NRM Show 2012**
- **Grand Champion Wintershow West-Brabant 2014**
- **The ONLY cow ALIVE with 6 EXCELLENT dtrs / De enige levende koe met 6 EXCELLENTE dtrs**
- **>95.000kgM lifetime production / >95.000kgM levensproductie**

Braedale GOLDWYN

Agathe VG-88-FR

Conf. VG-88-FR

2.03 305d 10.366kgM 3.2% 332F 3.1% 321P
3.06 305d 13.338kgM 3.5% 467F 3.1% 413P

- **3rd Sr. Cow at the Nat. Show Le Mans 2011**

Picston SHOTTLE

Toulouse VG-89-FR 2yr.

Conf. VG-89-FR 2yr.

2.02 305d 10.804kgM 4.0% 432F 3.2% 346P
3.11 305d 11.653kgM 4.3% 501F 3.2% 373P

- **Full sister to the proven bull Texas at Genes Diffusion / Volle zus van de dochtergeteste stier Texas bij Genes Diffusion**
- **Maternal sister to Umelin - Dam to the famous Amarante EX-90-FR / Halfzus van Umelin - moeder van de bekende Amarante EX-90-FR**

Volgende moeders

4. Rosière EX-90-FR
5. Menthe VG-89-FR
6. Ixias EX-93-FR
7. Eglantine EX-94-FR

GESEKSTE embryo's van de super dochtergeteste exterieurstier DELTA-LAMBDA uit de enige echte Carf Emeraude EX-91 -NL. De kans op een halfzus van JK DG Esmeralda EX-92 -NL EX-94 uier!! Dezelfde familie als Amarante EX-FR - 2x Franse koe van het jaar!!

FEMALE embryos from the huge dtr proven TYPE & GTPI bull Delta-Lambda are selling from the 'one and only' Carf Emeraude EX-91 -NL!! The chance to create a sister to JK DG Esmeralda EX-92 -NL EX-94 -MS!! Same family as Amarante EX-FR - 2x French Cow of the Year!!



Halfzus van embryo's: JK DG Esmeralda EX-92-NL



Dezelfde familie: Capj Irana - 1ste @ Colmar '16

M. Carf Emeraude EX-91 -NL

Frans nationaal kampioene & super fokkoe!!



Christmas @ JK Eder TAG SALE

30. JK Eder DG EMERAUDE 6

NL 657997467 • 29.09.2020

Aurora MITCHELL

(Mitchell x Bombero x Mayfield)

JK Eder DG Emeraude 2 VG-85-NL 2yr.

Conf. VG-85-NL VG-87-MS 2yr.

2.02 293d 8.190kgM 4.4% 356F 3.8% 310P
3.01 430d 15.192kgM 4.1% 624F 3.7% 558P
4.06 305d 12.229kgM 4.4%F 3.6% (proj.) LW112

- **3.7% PROTEIN** / 3.7% EIWIT
- **Halfzus van:** / Maternal sister to:
DG JK Eder Edrea EX-90-NL EX-91-MS 4yr.
- Res. 2-Yr Old Champion Wintershow Noordeloos '18
& JK Eder DG Elisa VG-87-NL VG-88-MS 2yr.
- **Great production & transmitting cow** /
Geweldige productie en fokke

Bacon-Hill MONTROSS

JK Eder Emeraude 2 VG-88-NL VG-89-MS 2yr.

Conf. VG-88-NL VG-89-MS 2yr.

2.02 367d 8.504kgM 4.9% 414F 4.0% 338P
3.06 322d 8.649kgM 5.1% 440F 3.9% 340P
4.06 359d 8.051kgM 4.6% 369F 4.0% 320P

- **Res. Champion 2-Yr. Old & Best Udder**
Hoornaar '15
- **Almost 4.0% PROTEIN** / Bijna 4.0% EIWIT!!
- **Sister to:** / Zus van: JK DG Esmeralda EX-92-NL

Amighetti NUMERO UNO

Carf Emeraude EX-91-NL

Conf. EX-91-NL

2.03 570d 17.721kgM 3.9% 694F 3.4% 601P
4.00 330d 15.317kgM 3.9% 598F 3.2% 482P
5.06 305d 15.930kgM 3.7% 589F 3.1% 497P

- **s. Braedale GOLDWYN**
- **Champion 2-Yr. Old SPACE 2011**
- **1st Jr. 2-Yr. National Show Le Mans 2011**
- **6th in the finals at the Nat. NRM Show 2012**
- **Grand Champion Wintershow West-Brabant 2014**
- **The ONLY cow ALIVE with 6 EXCELLENT dtrs** /
De enige levende koe met 6 EXCELLENTE dtrs

Volgende moeders

4. Agathe VG-88-FR
5. Toulouse VG-89-FR 2yr.
6. Rosière EX-90-FR
7. Menthe VG-89-FR
8. Ixias EX-93-FR
9. Eglantine EX-94-FR

VLEKKLOOS... prachtige Mitchell dochter uit een AB-85 Montross moeder terugvoerend op Carf Emeraude EX-91-NL. Grootmoeder is de halfzus van JK DG Esmeralda EX-92-NL, 6de in volgens velen de sterkste klasse van de Europese Show in Libramont vorig jaar.

FLAWLESS... pretty Mitchell daughter backed by a VG-85 Montross dam going back on Carf Emeraude EX-91-NL! Grand dam is the maternal sister to JK DG Esmeralda EX-92-NL, 6th in her section at the European Show in Libramont 2019.

Halfzus van de moeder: JK Eder DG Elisa VG-87-NL VG-88-MS 2yr.
Geweldige productie en show koe!! 3.8% EIWIT!!



2. M. JK Eder DG Emeraude 2 VG-88-NL VG-89-MS 2yr.



Dezelfde familie: JK Eder DG Elisa VG-88-NL 2yr.
Vaarzenkampioene Fokveedag Hoornaar 2019

Christmas @ JK Eder TAG SALE

31. JK Eder **EDREA**

NL 627396951 • 09.10.2019

Aurora MITCHELL

(Mitchell x Bombero x Mayfield)

DG JK Eder Edrea EX-90-NL EX-91-MS 4yr.

Conf. EX-90-NL EX-91-MS 4yr.

2.02 330d 9.279kgM 4.2% 393F 3.4% 315P
3.02 329d 12.630kgM 4.1% 514F 3.5% 435P
4.03 364d 12.245kgM 4.6% 566F 3.6% 445P

- Res. 2-Yr Old Champion Wintershow Noordeloos 2018 / Reserve kampioene vaarzen Wintershow Noordeloos 2018
- >1000kg combined Fat + Protein / >100kg gecombineerd vet + eiwit

Larcrest COMMANDER

JK Eder Emeraude 2 VG-88-NL VG-89-MS 2yr.

Conf. VG-88-NL VG-89-MS 2yr.

2.02 367d 8.504kgM 4.9% 414F 4.0% 338P
3.06 322d 8.649kgM 5.1% 440F 3.9% 340P
4.06 359d 8.051kgM 4.6% 369F 4.0% 320P

- Res. Champion 2-Yr. Old & Best Udder Hoornaar '15
- Almost 4.0% PROTEIN / Bijna 4.0% EIWIT!!
- Sister to: / Zus van: JK DG Esmeralda EX-92-NL - 6th place European Show Libramont 2019

Amighetti NUMERO UNO

Carf Emeraude EX-91-NL

Conf. EX-91-NL

2.03 570d 17.721kgM 3.9% 694F 3.4% 601P
4.00 330d 15.317kgM 3.9% 598F 3.2% 482P
5.06 305d 15.930kgM 3.7% 589F 3.1% 497P

- s. Braedale GOLDWYN
- Champion 2-Yr. Old SPACE 2011
- 1st Jr. 2-Yr. National Show Le Mans 2011
- 6th in the finals at the Nat. NRM Show 2012
- Grand Champion Wintershow West-Brabant 2014
- The ONLY cow ALIVE with 6 EXCELLENT dtrs / De enige levende koe met 6 EXCELLENTE dtrs

Volgende moeders

4. Agathe VG-88-FR
5. Toulouse VG-89-FR 2yr.
6. Rosière EX-90-FR
7. Menthe VG-89-FR
8. Ixias EX-93-FR
9. Eglantine EX-94-FR

Geweldig mogeljkheid!! Uit Emeraude haar meest recente EX-nakomeling DG JK Eder Edrea EX-90-NL EX-91 uier 4jr. wordt een witte show pink van Aurora MITCHELL aangeboden!! De eerste drie generaties in deze lijn gingen er allemaal met het zegelint vandoor op Nationale en Regionale keuringen!! Wat een super aanbod! Klaar om te schitteren in de keuringsring!

Opportunity KNOCKS! From Emeraude her latest EX-descentdant DG JK Eder Edrea EX-90-NL EX-91-MS 4yr. is selling a lovely silky white MITCHELL heifer!! First three generations were all Champions at National & Regional show!! What a great offer!! Ready to dance on the coloured shavings!

Moeder: DG JK Eder Edrea EX-90-NL EX-91-MS 4yr.
Reserve kampioene vaarzen Wintershow Noordeloos 2018



Gr. Moeder: JK Eder Emeraude 2 VG-88-NL 2yr.



Dezelfde familie: Amarante EX-FR
2x Franse koe van het jaar

— Alger Meekma

Christmas @ JK Eder TAG SALE

32. 3 FEMALE EMBRYOS

#3 FEMALE Riverdown UNSTOPABULL-RED x FG KOE Lady Delilah *RC

Method: ET - Grade A - Direct Transfer

Location: The Netherlands

FEMALE Riverdown UNSTOPABULL-RED incl. ETN

(Avalanche *RC x Applejack-Red x Niagra)

FG KOE Lady Delilah *RC

Due: / Kalft: augustus 2021

- RED CARRIER King Doc grand daughter of the legendary Lady Gaga EX-97-DE EX-98-MS! / ROOD FACTOR King Doc kleindochter van de legendarische Lady Gaga EX-97-DE EX-98-MS
- KING DOC x LADD P x MODEST x LHEROS

Woodcrest KING DOC

FG Lady in Black *RC VG-86-DE 2yr.

Conf. VG-86-DE VG-86-MS 2yr.

1/1 La 305d 11.175kgM 4.0% 443F 3.5% 386P

- >11.000kgM with 3.5% protein in her first lactation! / >11.000kgM met 3.5% eiwit in haar eerste lactatie!
- Maternal sister to: / Halfzus van: HAM Fever Lilli VG-89-DE VG-89-MS La3.

Tiger-Lily LADD P-RED

Lady Gaga EX-97-DE EX-98-MS

Conf. EX-97-DE EX-98-MS

8/8La 305d 13.993kgM 3.7% 511F 3.1% 431P
HL7 305d 17.751kgM 3.5% 629F 2.9% 515P

- Sr. Champion SDB '19
- 2nd place European Show Libramont '19
- 1st place German Dairy Show '19,
- Grand Champion SDB '18
- 1st place Swiss Expo '18
- 1st Sr. Cow Swiss Expo Lausanne '15 & '16
- Grand Champion DHV-Schau '17 & '15
- Grand Champion SDB '16 & '15
- 2nd place European Show Colmar '16
- Grand Champion WEU-Konvent '14
- Grand Champion Thuringa Holstein Open 2014

Volgende moeders

4. 295 VG-86-FR
5. 159 VG-89-FR (s. Rudolph)

GESEKSTE Riverdown UNSTOPABULL-RED embryo's uit de ROOD FACTOR King Doc kleindochter van de legendarische Lady Gaga EX-97-DE EX-98 uier!! De show koe met ongekende overwinningen zoals: 2x Nationaal kampioene in Duitsland, rubriekswinnares op de Europese show, Swiss Expo en veel meer!

FEMALE Riverdown UNSTOPABULL-RED embryos from the RED CARRIER King Doc grand daughter of the legendary Lady Gaga EX-97-DE EX-98 mammary system!! The show cow with an unrivalled victory list with winning 2x National Champion, classwinner at European Show, Swiss Expo and much more!



2. M. FG Lady in Black *RC VG-86-DE VG-86-MS 2yr.



Donor. FG KOE Lady Delilah *RC

Grootmoeder: Lady Gaga EX-97-DE EX-98-MS @ Europese show Libramont '19



33. 3 FEMALE EMBRYOS

#3 FEMALE Col DG CRUSHTIME x Avalanche Baccara

Method: ET - Grade A - Direct Transfer

Location: The Netherlands

FEMALE Col DG CRUSHTIME

(Crush x Mogul x Meridian)

Avalanche Baccara incl. ETN

Due: / Kalft: mei 2021

- **UNIQUE Avalanche *RC grand dtr to Barbara!** / UNIEKE Avalanche *RC klein dtr van Barbara!



Volle zus van Baccara: Avalanche Bora Bora *RC
Verkocht in La Waebera veiling, Zwitserland

Dymentholm Mr Apples AVALANCHE *RC

River-Valley Barbara 6 *RC EX-90-USA

Conf. EX-90-USA

- **RED CARRIER Goldwyn dtr from Barbara!!** / ROOD FACTOR Goldwyn dtr van Barbara!!
- **Full sister to:** / Volle zus van: River-Valley Barbara 5-ET *RC EX-91 -USA EX-MS

Braedale GOLDWYN

Rainyridge Talent Barbara *RC EX-95-USA

Conf. EX-95-USA

2-05 2x 298d 11.213kgM 4.1% 464F 3.2% 358P
3-04 2x 365d 15.633kgM 3.6% 570F 3.3% 514P
5-00 2x 305d 12.996kgM 3.8% 498F 3.0% 395P

- **Unanimous All-American 5-Yr-Old 2010**
- **Unanimous All-Canadian 5-Yr-Old 2010**
- **HM All-American Aged Cow 2011**
- **1st World Dairy Expo 2010**
- **1st Royal Winter Fair 2010**
- **Nom All-American Jr 3-Yr-Old 2008**
- **HM. Grand Champion Calgary Spring Show 2009**

Volgende moeders

4. RF Outside Breeze EX-95-USA 2E
5. Rayverley Briana Milan EX-CAN 2E
6. Rainyridge Tony Beauty EX-CAN 5E 9*
7. Despics Tempo Diana VG-85-CAN

GESEKSTE embryo's van de EXTERIEUR sensatie CRUSHTIME! Zijn dochters imponeren op alle niveaus op shows WERELDWIJD!
Kleindochter van de All-American: Rainyridge Talent Barbara *RC EX-95-USA. Direct uit 5 generaties EXCELLENTE moeders!

FEMALE embryos from the TYPE sensation CRUSHTIME! His daughters are impressing at every level all around the WORLD!
Grand dtr to the All-American & All-Canadian: Rainyridge Talent Barbara *RC EX-95-USA. Directly from 5 generations EXCELLENT dams!

Donor: Avalanche Baccara



2. M. Rainyridge Talent Barbara *RC EX-95-USA
All-American & All-Canadian koel!



Stamkoel: Rainyridge Tony Beauty EX-CAN 5E 9*



Christmas @ JK Eder TAG SALE

34. 4 EMBRYOS

#4 Coomboona Zipit MIRAND PP *RC x Deslacs New Alicia-Red VG-87-NL 2yr.

Method: ET - Grade A - Direct Transfer

Location: The Netherlands

Coomboona Zipit MIRAND PP *RC

(Zipit-P x Kingboy x Ladd P-Red)

Deslacs New Alicia-Red VG-87-NL 2yr. incl. ETN

Conf. VG-87-NL 2yr.

2.01 265d 7202kgM 4.4% 317F 3.4% 241P
2.01 305d 8.132kgM 4.4%F 3.4%P (proj.)

- **UNIQUE AVALANCHE *RC 2-Yr Old!**
UNIEKE AVALANCHE *RC vaars!!
- **+2.03 PTAT & +8 Conformation (12/20)**
- **Niece: New Alicia also sired by Avalanche *RC was 2nd Summer Yearling Heifer, World Dairy Expo 2019 / Nicht van New Alicia idem dochter van Avalanche *RF was 2nd Summer Yearling Heifer, World Dairy Expo 2019**
- **Deep Canadian cow family with ROYAL Champions & All-Canadians! / Diepe Canadese koe familie met ROYAL kampioenes & All-Canadians!**

Dymentholm Mr Apples AVALANCHE *RC

Deslacs Talent Alyana Red EX-92-CAN EX-95-MS

Conf. EX-92-CAN EX-95-MS

3.01 305d 11.881kgM 4.4% 524F 3.4% 404P
4.08 305d 13.144kgM 4.2% 554F 3.4% 440P
6.07 305d 13.626kgM 4.7% 643F 3.5% 473P

- **1st Sr. 2-Yr Old R&W Royal Winter Fair 2015**
- **2nd Milking Yearling Royal Winter Fair R&W 2014**
- **1st 4-Yr Old & HM. Grand Champion Supreme Dairy Red & White Show 2017**
- **1st Sr. 2-Yr Old & Res. Int. Champion**
- **Supreme Dairy Red & White Show 2015**
- **1st Milking Yearling Supreme Laitier R&W 2014**

Ladino Park TALENT *RC

Parile Kite Alicia EX-90-CAN EX-MS 2E 29*

Conf. EX-90-CAN EX-MS 2E 29*

3.10 305d 11.605kgM 5.0% 581F 3.2% 375P
5.07 305d 10.879kgM 6.1% 663F 3.3% 356P

- **Grand Champion R&W Royal Winter Fair 2007**
- **Grand Champion Quebec International 2007**
- **Grand Champion Quebec Spring Show R&W '06 & '08**
- **All-Canadian R&W Sr. 3-Yr Old 2007**
- **HM. All-American R&W Sr. 2-Yr Old 2006**
- **12 EXCELLENT dtrs and 26 VG dtrs in Canada! / 12 EXCELLENTE dtrs en 26 AB dtrs in Canada!**

Volgende moeders

4. Parile Dragon Amitie GP-84-CAN 5yr. 2*
5. Parile Broker Aimable VG-85-CAN VG-85-MS 5yr.
6. Boulet Hugo Amitie GP-82-CAN 2yr.
7. Birch-Hollow Royalty Amy EX-91-USA 4yr.

MIRAND PP *RF embryo's uit een UNIEKE AB-87 2jr. Avalanche *RF klein dochter van de Grand Champion R&W Royal: Parile Kite Alicia EX-CAN 29*. Moeder Alyana heeft een EX-95 uier en was 1st Sr. 2-Yr Old and Best Bred & Owned Champion Royal Winter Fair 2015!

MIRAND PP *RC embryos from a UNIQUE VG-87 2yr. Avalanche *RC grand dtr to the Grand Champion R&W Royal: Parile Kite Alicia EX-CAN 29*. Dam Alyana has an EX-95 mammary system and was 1st Sr. 2-Yr Old and Best Bred & Owned Champion Royal Winter Fair 2015!



M. Deslacs Talent Alyana Red EX-92-CAN EX-95-MS 2E



2. M. Parile Kite Alicia EX-90-CAN EX-MS 2E 29*

Donor. Deslacs New Alicia-Red VG-87-NL 2yr.

Unieke Avalanche *RF kleindochter van Parile Kite Alicia EX-CAN



35. Hul-Stein FLOSSIE

NL 671491851 • 07.05.2020

GTPI index (12/20): +2760 GTPI // +596 NM\$ // +1.90 PTAT // +1220 Milk // 0.08%F // 0.07%P

NVI index (12/20): +287 NVI // +1502 Milk // +0.20 %F // +0.10 %P // +454 INET // +470 Lifetime

Peak TROPIC

(Hotline x Rubicon x Epic)

Hul-Stein Foekje

2.02 305d 9.556kgM 4.1%F 3.4%P (proj.)

- **Dam to:** / Moeder van: Hul-Stein Floris +2772 GTPI / +644 NM\$ - December 2020
- **Imax x Jedi x Balisto x Man-O-Man x Baxter**



Hul-Stein Flossy - zij wordt verkocht!

Silverridge V IMAX

Hul-Stein Fedi 2

Conf. N.C.

- **Great index: +2600 GTPI // +514 NM\$ and +0.66 PTAT (12/20)**
- **Former #30 GTPI Cow in Europe!** / Voormalig #30 GTPI koe van Europa!
- **Granddam is the full sister to FONTOY @ Evolution** / Grootmoeder is volle zus van FONTOY @ Evolution

S-S-I Montross JEDI

Schreur DG Fantastica VG-85-UK 3yr.

Conf. VG-85-UK 3yr.

La1 305d 10.015kgM 4.05%F 3.37%P

- **s. De-Su 11236 BALISTO**
- **The highest daughter from Fily Sher in the breed /** De hoogste dochter van Fily Sher van het ras

Volgende moeders

4. Fily Sher VG-86-FR VG-86-MS 2yr.
5. Dinas Sher VG-86-FR VG-87-MS
6. Belis Sher RC VG-85-FR
7. Gen-1-Beq Durham Sherry VG-87-CAN 7*
8. Glen Drummond Splendor VG-86-CAN 38*
9. Glen Drummond Aero Flower VG-88-CAN 18*
10. Glen Drummond Shower EX-CAN 14*
11. Glen Drummond S C Jo Beth EX-CAN 2E 7*
12. Glen Drummond Matt Beth VG-85-CAN 4*
13. Glen Drummond Marquis Beth VG-CAN

Super PEAK TROPIC dtr die garant staat voor +2760 GTPI in combinatie met +287 NVI (12/20). Grootmoeder is de voormalige #30 GTPI koe van Europa. Dezelfde familie als Des-Y-Gen Planet Silk *RF EX-90-USA EX-92 uier - verkocht voor 1,000,000 dollar! Koop uw kerstgeschenk, een koop dit prachtige kalf!

Super PEAK TROPIC dtr which guarantees for +2760 GTPI in combination with +287 NVI (12/20). Grand dam is the former #30 GTPI cow in Europe. Same family as Des-Y-Gen Planet Silk *RC EX-90-USA EX-92-MS - sold for 1,000,000 dollars! Get you Christmas present with this lovely heifer selling!

Dezelfde familie: Des-Y-Gen Planet Silk *RC EX-90-USA EX-92-MS

Invloedrijke fokkoe wereldwijd!



4. M. Fily Sher VG-86-FR 2yr.



2. M. Hul-Stein Fedi 2

Christmas @ JK Eder TAG SALE

Beth Hedges

36. 1st Choice FEMALE

JK DG Seline 1 • NL 657997380 • 19.08.2020 • GTPI index (12/20): +2656 GTPI // 568 NM\$ // +0.22 PTAT
JK DG Seline 2 • NL 657997405 • 25.08.2020 • GTPI index (12/20): +2476 GTPI // 413 NM\$ // +0.29 PTAT

KNS SIMON P

(Semino x Board x Balisto)

JK Eder DG Firefly Seline

Due: / Kalf: januari 2021

- +2610 GTPI // +514 NM\$ // +0.93 PTAT
- December 2020 index proof.

Pine-Tree FIREFLY

JK Eder DG Silvester VG-89-NL 3yr.

Conf. VG-89-NL VG-89-MS 3yr.

2.05 331 d 9.131kgM 4.8% 435F 3.8% 343P
3.06 381 d 11.824kgM 4.8% 565F 3.9% 462P

- Successful at the HHH-Show 2019 /
Succesvol op de HHH-Show 2019
- 3.9% PROTEIN / 3.9% EIWIT
- Maternal sister to: / Halfzus van:
JK Eder DG Silly 5 VG-87-NL 2yr.
- sells either in the JK Eder Christmas Sale 2020

Seagull-Bay SILVER

JK Eder DG Silly I VG-86-NL VG-87-MS 3yr.

Conf. VG-86-NL VG-87-MS 3yr.

2.08 450 d 14.028kgM 4.3% 608F 3.7% 516P
4.00 520 d 18.709kgM 4.4% 818F 3.8% 704P

- Full brother sold for 44.000 EUR /
Volle broer verkocht voor 44.000 EUR

Volgende moeders

4. JK Eder DG Silly VG-85-NL VG-85-MS
5. All.Nure Baxter Silvy *CV EX-90-NL EX-MS 5yr.
6. La Felce Seretta EX-91-IT
7. Aurora Nesta EX-91-IT
8. Morningview Aerostar Jix VG-87-USA
9. Morningview Bellwood July GP-USA
10. Morningview Converse Judy EX-93-USA GMD DOM

Uit het hart van de Converse Judy familie!! Verkocht worden eerste keus vaarskalven van Simon P - #1 hoornloze RZG stier. Ongekende mogelijkheden op zowel de RZG als GTPI markt! 4de moeder is de voormalige #1 GTPI koe van Europa: All.Nure Baxter Silvy *CV EX-90-NL 5jr.

From the heart of the Converse Judy family!! Selling is a first choice by two full sisters sired by the #1 RZG POLLED bull: SIMON P! Great possibilities on the RZG and GTPI market! 4th dam is the former #1 GTPI cow in Europe: All.Nure Baxter Silvy *CV EX-90-NL 5yr.

5de Moeder: All. Nure Baxter Silvy *CV EX-90-NL EX-MS 5yr.

Voormalig #1 GTPI koe van Europa



4. M. JK Eder DG Silly VG-85-NL VG-85-MS
Voormalig top 20 GTPI koe in Europa



Stammoeder: Morningview Converse Judy EX-93-USA GMD DOM

Christmas @ JK Eder TAG SALE

Alex Art

37. 3 EMBRYOS

#3 Siemers HAVE IT ALL x BTS-Avea-Red VG-87-NL VG-89-MS 2yr.

Method: IVF - Grade A - Direct Transfer

Location: The Netherlands

Siemers HAVE IT ALL

(Excalibur x King Doc x Monterey)

BTS-Avea-Red VG-87-NL VG-89-MS 2yr.

Conf. VG-87-NL VG-89-MS 2yr.

2.03 323d 9.529kgM 4.1% 386F 3.3% 314P
3.09 305d 9.908kgM 4.2% 418F 3.5% 342P

- 1st & Res. 2-Yr. Old Champion Opmeer 2014 (Against B&W)
- 1st Jr. Heifer Beilen 2013
- Full sister to: / Volle zus van: Gen-I-Beq Inaika-Red - 2nd place European Show Libramont 2019 behind PASTEQUE!
- Dam to: / Moeder van: R DG ADAM-RED
- The grand dam of a former #1 GTPI, gRZG and gNVI heifer in Europe! / Grootmoeder van een voormalig #1 GTPI, gRZG en gNVI pink van Europa!
- Grand dam to: / Grootmoeder van de #1 RZE stier in Duitsland: NH Solito-Red @ Masterrind.

Our-Favorite DETOX

KHW-I Aika Baxter VG-89-CAN 5yr. (MAX)

Conf. VG-89-CAN 5yr. (MAX)

2-01 2x 365d 13.577kgM 5.8% 785F 3.7% 499P
5.06 365d 18.414kgM 5.9% 1.079F 3.3% 616P

- Maximum score in her 2nd lactation! / Maximale score in haar 2de lactatie!
- Dam to: / Moeder van: AIKMAN RC @ Generations

Emerald-Acr-Sa T-BAXTER

KHW Goldwyn Aiko-ET *RC EX-91-USA

Conf. EX-91-USA

2-06 2x 365d 11.186kgM 6.4% 711F 4.0% 446P
5-07 2x 365d 13.222kgM 5.1% 680F 4.0% 526P

- Dam to: / Moeder van: Applejax *RC, Perfect Aiko *RC, Fraiko *RC & more

Volgende moeders

4. Kamps-Hollow Altitude-ET *RC EX-95-USA 2E DOM
5. Clover-Mist Alisha EX-93-USA 3E GMD DOM
6. Clover-Mist Augy Star EX-94-USA 4E DOM
7. D-R-A August EX-96-USA 4E DOM
8. D-R-A Ideal Precious Leader EX-90-USA 2E
9. D-R-A Princess Lad Leader EX-90-USA 3E

Een unieke mogelijkheid uit één van de best fokkende rode koefamilies!! Bemachtig een halfzus van een van de beste RODE show koeien in Europa van dit momēt: Sam-Oziris. Donor haar volle zus was tweede op de Europese show in Libramont achter de latere algemeen kampioene: Pasteque. Avea is de grootmoeder van de #1 RZE stier: Solito-Red!

A rare opportunity from the very best R&W transmitting cow family of BTS-Avea-Red! Get a maternal sister to one of the best young cows in Europe at the moment: Sam-Oziris. Dam her full sister was 2nd at European Show Libramont 2019 behind the later Grand Champion Pasteque. Avea is grand dam to the #1 RZE bull in Germany: Solito-Red!

Halfzus van embryo's: Sam-Oziris

Een van de beste RODE jonge koeien van Europa



Donor: BTS-Avea-Red VG-87-NL VG-89-MS 2yr.



Volle zus Avea: Gen-I-Beq Inaika-Red
2de plaats Europese Show Libramont 2019

Christmas @ JK Eder TAG SALE

38. 2 FEMALE EMBRYOS

#2 FEMALE Peak AltaDATELINE x Ms DG Delta Bridgett *RC EX-92-USA

Method: IVF - Grade A - Direct Transfer

Location: The Netherlands

FEMALE Peak AltaDATELINE

(2756 GTPI / 2.97 PTAT)

Ms DG Delta Bridgett EX-92-USA

Conf. EX-92-USA

2-09 346d 15.202kgM 4.5% 683F 3.2% 493P
4-08 236d 14.452kgM 4.4% 606F 3.0% 409P

- **Bridgett is a TOP ranking *RC GTPI cow in the States** / Bridgett is een hoge geïndexeerde *RF GTPI koe in Amerika.

Mr Mogul DELTA

Calbrett Supersire Barb *RC VG-86-USA 2yr.

Conf. VG-86-USA 2yr.

2-04 365d 13.859kgM 4.2% 582F 3.4% 471P

- **Dam to the former No. 1 & No. 2 GTPI Red Heifers in the World** / Moeder van de voormalige #1 & #2 GTPI rode pinken van het ras!
- **Many sons in AI!** / Meerdere zonen bij de K.I.

Seagull-Bay SUPERSIRE

Rainyridge Super Beth *RC VG-86-CAN 2yr.

Conf. VG-86-CAN 2yr.

2.03 365d 10.768kgM 3.7% 398F 3.5% 373P
4.06 365d 15.267kgM 3.9% 588F 3.5% 540P

- **s. Charlesdale SUPERSTITION**
- **Top seller of the Rocky Mountain High Sale for \$79,000**
- **Dam to:** / Moeder van: Calbrett Supersire Barb *RC, topseller Corndale Summer Sale for \$265,000
- **Multiple sons in AI** / Meerdere zonen bij de K.I.

Volgende moeders

4. Rainyridge Talent Barbara *RC EX-95-USA 2*
5. RF Outside Breeze EX-95-USA 2E
6. Rayverley Briana Milan EX-CAN 2E
7. Rainyridge Tony Beauty EX-CAN 5E 9*
8. Despicks Tempo Diana VG-85-CAN

GESEKSTE AltaDATELINE (2724 GTPI / 2.16 PTAT) embryo's uit de EX-92 ingeschreven en top *RF GTPI koe: Ms DG Delta Bridgett *RF. Haar volle zus heeft meerdere nakomelingen >2700 GTPI en haar Modesty dtr was de veilingtopper op de National Convention Sale '17 voor \$105,000. Terugvoerend op de All-American: Rainyridge Talent Barbara *RC EX-95-USA.

FEMALE AltaDATELINE (2724 GTPI / 2.16 PTAT) embryos from the EX-92-USA top ranking *RC GTPI cow: Ms DG Delta Bridgett *RC. Her full sister has several progeny >2700 GTPI and her Modesty dtr topped the National Convention Sale '17 for \$105,000. Tracing back to the All-American & All-Canadian: Rainyridge Talent Barbara *RC EX-95-USA.

Donor: Ms DG Delta Bridgett *RC EX-92-USA



3. M. Rainyridge Talent Barbara *RC EX-95-USA All-American & All-Canadian koe!



M. Calbrett Supersire Barb *RC VG-86-USA 2yr.

© Cybil Fisher

Christmas @ JK Eder TAG SALE

39. 4 EMBRYOS

#4 FEMALE Cycle McGucci JORDY-RED x R DG Adalyn-Red VG-87-NL 2yr.

Method: IVF - Grade A - Direct Transfer

Location: The Netherlands

Cycle McGucci JORDY-RED

(McGucci *RC x Gold Chip x Lion King *RC)

R DG Adalyn-Red VG-87-NL 2yr.

Conf. VG-87-NL 2yr.

La1 344d 10.412kgM 4.4% 460F 3.7% 385P

- Dam to REDALEX @ Intermizoo (s. Argo)
Moeder van REDALEX @ Intermizoo (v. Argo)
- **3.7% PROTEIN, HIGH GENOMICS, RED, AIKO COW FAMILY!** / 3.7% EIWIT, HOGE GENOMICS, ROOD, AIKO KOE FAMILIE

Stantons ENTITLE *RC

R DG Avira Red VG-85-NL 2yr.

Conf. VG-85-NL 2yr.

2.03 305d 9.601kgM 4.1% 392F 3.8% 361P
3.07 305d 11.126kgM 3.8% 420F 3.3% 372P

- Dam to R DG ALADDIN-Red @ Cogent /
Moeder van R DG ALADDIN-RED @ Cogent
- Former top 5 CTPI R&W Heifer in Europe! /
Voormalig top 5 GTPI ROOD in Europa!
- Sister to the high R&W bulls Aviator Red,
Alphaman and Adam / Zus van de hoge RODE
stieren Aviator Red, Alphaman en Adam
- **3.8% PROTEIN!!** / 3.8% EIWIT!!

Ladys-Manor OLYMPIAN *RC

BTS-Avea Red VG-87-NL VG-89-MS 2yr.

Conf. VG-87-NL VG-89-MS 2yr.

2.03 323d 9.529kgM 4.1% 386F 3.3% 314P
3.09 305d 9.908kgM 4.2% 418F 3.5% 342P

- s. Our-Favorite DETOX *RC
- Show winner! 1st in Beilen and Res. Champion 2yr. Old
Opmeer (Against B&W's)
- Maternal sister to AIKMAN *RC /
Halfzus van AIKMAN *RF
- Full sister to: / Volle zus van: Gen-I-Beq Inaika-Red
- 2nd place European Show Libramont 2019

Volgende moeders

4. KHW-I Aika Baxter VG-89-CAN 5yr. (MAX)
5. KHW Goldwyn Aiko-ET *RC EX-91-USA DOM
6. Kamps-Hollow Altitude-ET *RC EX-95-USA 2E DOM
7. Clover-Mist Alisha EX-93-USA 3E GMD DOM
8. Clover-Mist Augy Star EX-94-USA 4E DOM
9. D-R-A August EX-96-USA 4E DOM

RODE SHOW embryo's van de 'Premier Sire World Dairy Expo 2019'
JORDY-RED van de moeder van Redalex @ Intermizoo: R DG
Adalyn-Red VG-87-NL 2yr. // 3.7% EIWIT met >10.000kgM. Super
lijn van de Aiko / Apple koe familie!!

R&W SHOW embryos by the 'Premier Sire World Dairy Expo 2019'
JORDY-RED from the dam to Redalex @ Intermizoo: R DG
Adalyn-Red VG-87-NL 2yr. // 3.7% PROTEIN with >10.000kgM.
Tremendous line of the Aiko / Apple cow family!!

Donor: R DG Adalyn-Red VG-87-NL 2yr.



Anna Joosse



3. M. KHW-I Aika Baxter VG-89-CAN 5yr. (MAX)
Moeder van o.a. AIKMAN *RF



M. R DG Avira-Red VG-85-NL 2yr.

Christmas @ JK Eder TAG SALE



Alex Arkink

EBA DAVINCI

515HO00383
EBA

Dylan x VG-87-FR zyr. Sillian x VG-88-FR Kingboy x VG-88-FR Mogul

TOTAL	GTPI +2739 // PTAT +2.85
PRODUCTION	Huge Components: +0.14%F // +0.09%P
FITNESS	2.86 SCS // +0.3 DPR // 1.9% SCE
TYPE	PTAT +2.85 // UDC +2.25 // FLC +1.57 +0.41 Rump Angle +2.79 Thurl Width +0.85 Teat Length & Ideal Set of Legs: -0.08 RLS / +2.34 RLR

The **ONLY** bull in the breed

>2739 GTPI, >2.85 PTAT, Positive DPR & Sloped Rumps!

TOTAL	GLPI +3340 // CONF. +14
PRODUCTION	+741 Milk // +0.45%F // +0.29%P
FITNESS	106 HL // 103 Milking Speed
CONFORMATION	+11 Mammary System +11 Feet & Legs +12 Dairy Strength +7 Rump +14 Total Conformation

The **#1 GLPI** bull in the breed with

>14 Conformation, >11 Udders, >11 F&L & >11 DS!!

+14 • **+2.85** • **+2739**
Conformation PTAT GTPI



Sloped Rumps
Positive DPR
IDEAL set of legs
Huge Fat & Protein %

Dam: EBA Netty VG-87-FR zyr.



2. Dam: EBA Liza VG-88-FR



3. Dam: EBA Heazy VG-88-FR

AI total

Guillaume Moy



Eurogenes Online EMBRYO Sales

WWW.EUROGENES.COM

Some examples of genetics delivered through Eurogenes / Diamond Genetics



DH Gold Chip Darling EX-96-CH

Supreme Champion Swiss Expo '17 & Grand
Champion Expo Bulle '18
Sold as an embryo through Diamond Genetics



JK Eder DG Esmeralda EX-92-NL

6th place European Show Libramont 2019
Owned by JK Eder Holsteins & DG



Drakkar Bulona EX-92-NL

Res. Sr. Champion HHH '18 and NRM '19
Owned by Hullcrest- & Heerenbrink Holsteins

WWW.EUROGENES.COM

Eurogenes Online EMBRYO Sales

Every 2 weeks through

WWW.EUROGENES.COM



Embryo combinations in the previous and upcoming embryo sales:



R&W European Champions!

FEMALE Mirand PP *RC embryos from BTS-Avea Red VG-87-NL VG-89-MS 2yr. - full sister to the 2nd Sr. R&W European Show Libramont '19; Gen-I-Beq Inaika FG.



R&W German Champion

NH DG Silky Red VG-87-DE 2yr. - Res. 2-Yr Old Champion GDS '19, Res. All-German '19 & sold for 42.000 EUR. Grand dtr to Des-Y-Gen Planet Silk EX-90-USA EX-92-MS.



Top ranking *RC GTPI Cow

Embryos selling from the top GTPI RED CARRIER cow MS DG-TM Delta Bridget *RC EX-91-USA La2 - Rainyridge Talent Barbara cow family!



Embryos from CHARLEY'S sisters!

Only @ Eurogenes you can buy embryos from the FULL SISTERS to Charley!! The CRIMSON cow family! (picture: De Volmer DG Caylee VG-86-NL VG-88-MS)



The extraordinary Emerald!

One of the greatest brood cows of her generation, Carf Emerald EX-91 - dam to many show winners!



JK DG Esmeralda EX-92-NL

FEM. embryos selling from JK DG Esmeralda EX-92-NL EX-94-MS. Show winning Doorman dtr: 6th in her section at European Show Libramont 2019!!



Full sister to ARCHRIVAL

FEMALE Stantons CHIEF from the incredible TYPE source & full sister to ARCHRIVAL: Flora Atwood Adeena VG-87-ES 2yr. Her full sister is grand dam to the reigning Junior Champion Swiss Expo 2020!!



Res. Grand WI Championship Show

FEMALE MOOVIN *RC (+3.79 PTAT) embryos from the R&W North-American show winner: Rob-Sara Awe Lovelee-Red EX-91-USA 2E. Create a maternal sister to the Res. Int. Champion WI Summer Show '20 by Jordy-Red.



Royal Winter Fair Champion

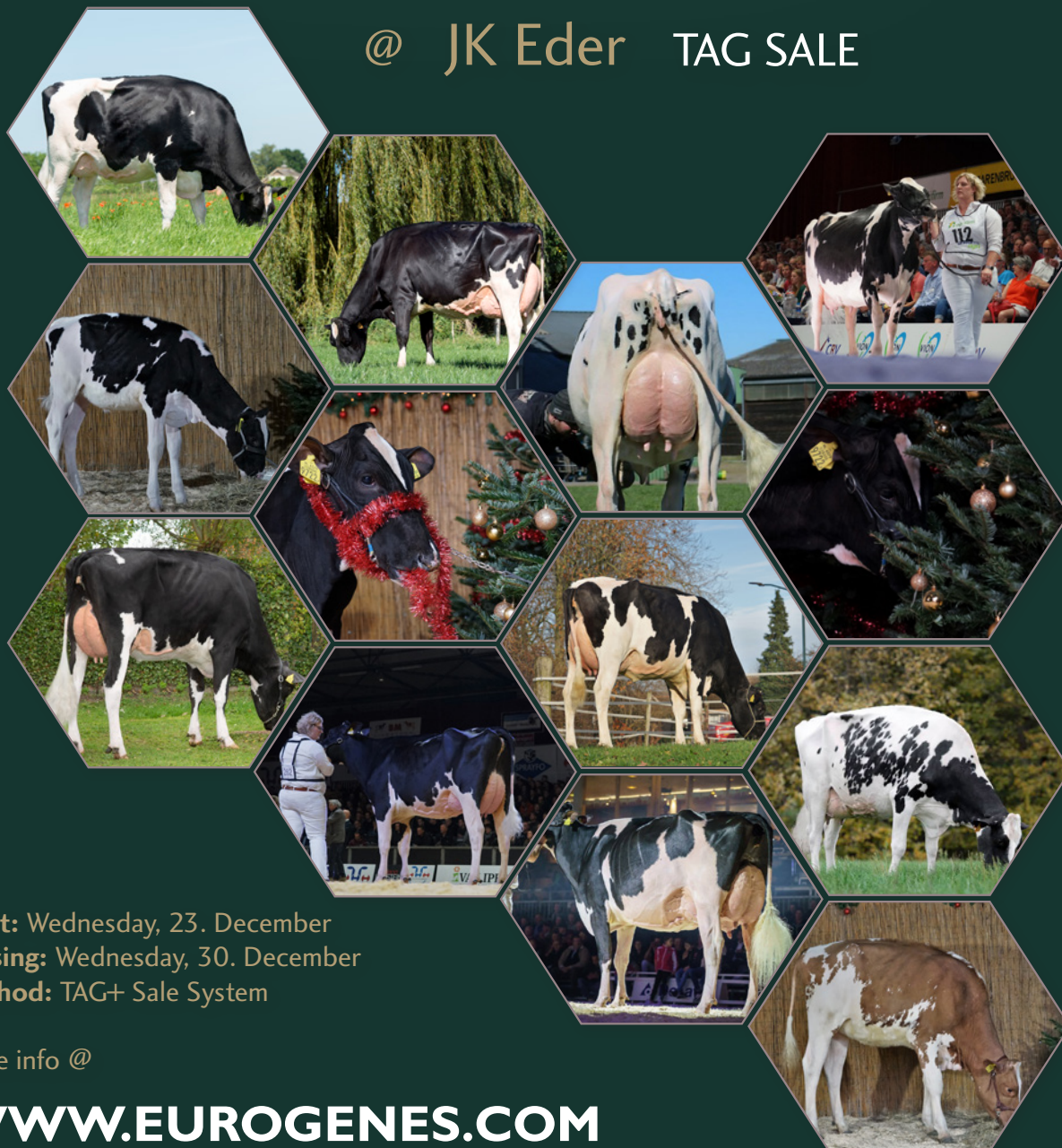
FEMALE Mirand PP *RC embryos from the UNIQUE VG-86-FR VG-88-MS 2yr. R&W Avalanche *RC grand dtr to Parile Kite Alicia EX-CAN 29* - Grand Champion R&W Royal Winter Fair 2007 & Grand Quebec Spring '06 & '08.

We'll open up the World to your genetics!

PICK your perfect CHRISTMAS present through the

Christmas

@ JK Eder TAG SALE



Start: Wednesday, 23. December
Closing: Wednesday, 30. December
Method: TAG+ Sale System

More info @

WWW.EUROGENES.COM